

Parts Manual
823108EN
12/31/2015

Cleco[®]

B1-C & BR-C Series
Chisel and Needle Scaler



For additional product information visit our website at <http://www.apextoolgroup.com>

Cleco®
Nomenclature

823108EN
12/31/2015

	XX	-	XXX	-	XX	-	XXX	-	K
<u>Tool Series</u> B1 = Shank (Square Chisel) BR = Shank (Round Chisel)									
<u>Tool Style</u> C = Chisel CNB = Chisel and Needle Scaler									
<u>Throttle Type</u> BV = Pistol Grip, Lever Throttle LT = Inline, Lever Throttle PT = Inline, Push-Pull Start									
<u>Nose Configuration (CNB models only)</u> RD = Round RET = Rectangular									
<u>Option</u> K = Needle Scaler Kit									

Cleco®

Description and Safety

The original language of this manual is English.

Product Safety Information:

Intended Use:

These chisels and needle scalars are driven by compressed air to remove material.

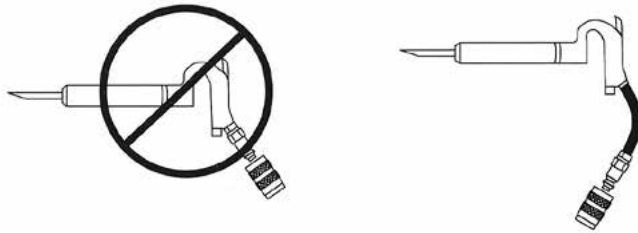
For additional product safety information refer to Apex Tool Group, LLC or Apex Tool Group GmbH & Co. OHG document CE-2017, General Safety Percussion Tools.

WARNING

These chisels or needle scalars must not be modified in any manner unless approved in writing by Apex Tool Group, LLC or Apex Tool Group GmbH & Co. OHG. All safety devices must be properly installed and maintained in good working order.

Quick Disconnect Coupling

WARNING



Attachment of a quick disconnect compressed air coupling directly to the inlet threads of a percussion tool can cause wear and failure of the coupling. Failure of the coupling may cause severe injury from the air hose end violently whipping about. If a quick disconnect air coupling is used, separate the coupling from the tool with a whip hose (1.5 feet minimum length).

Chisel/Scaler Care and Use

WARNING

Cracked chisels or implements are hazardous. Visually inspect the chisel or implement for cracks before using. Have all chisels magnifluxed before re-sharpening. Destroy and discard any chisel or implement that shows a crack or damage.

Correct selection of the chisel or other implement is important. Dull edges on the chisel or moil point cause the energy of the percussion blow to be absorbed by the tool, instead of the work piece, increasing the chance of chisel breakage.

When operating percussion tools in explosive or flammable environments, use only non-sparking chisels or implements such as those made from beryllium copper. Also, do not use cupped rivet sets with Cleco percussion tools to drive nails. Blows not centered on the nail can cause the nail to ricochet off the work and strike the user.

Air Line Lubrication:

Use Apex Tool Group, LLC or Apex Tool Group GmbH & Co. OHG's lightweight air tool oil 500021 (available in quantities shown in the following chart) or an SAE-5 lightweight spindle oil.

Part No.	Packaged	Designation
540397	1 Quart (0.94 liter)	Airlube 10W/NR-420LB DR
533485	1 US Gallon (3.78 liter)	Airlube 10W/NR-420LB DR

Air Supply Line:

Parameter	Description
Air Hose	Minimum inside diameter: 5/16" (7.9 mm) Maximum length: 8' (2.5 m)
Working pressure range	Performance rated at: 90 psi (620 kPa)
Compressed air	Air quality according to ISO 8573-1, quality class 2.4.3 The compressed air must be clean and dry.

Service and Repair:

Always disconnect the air supply before changing the chisel or implement or performing any service on the tool.

Tool service and repair should be performed by an authorized Apex Tool Group, LLC or Apex Tool Group GmbH & Co. OHG Center. Refer to the last page of this manual for locations.

Disposal:



Observe local disposal guidelines for all components of this tool and its packaging.

Copyright Protection:

Apex Tool Group, LLC or Apex Tool Group GmbH & Co. OHG reserves the right to modify, supplement or improve this document or the product without prior notice. This document may not be reproduced in any way, shape or form, in full or parts thereof, or copied to another natural or machine readable language or to a data carrier, whether electronic, mechanical, optical or otherwise without the express permission of Apex Tool Group, LLC or Apex Tool Group GmbH & Co. OHG.

Chisel Removal:

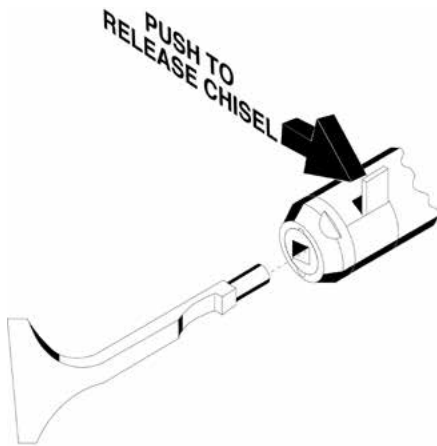
WARNING

Turn off the air supply and disconnect the air hose from the tool before removing any chisel or implement.

Use only notched B1-C approved safety retainer chisels with B1-C scalers and notched BR-C approved safety retainer chisels with BR-C scalers. Refer to Illustration “F” for a list of approved chisels.

B1-C Series Models:

Push the tang on the driver retainer (832956), away from the barrel to remove the chisel (see illustration below).



BR-C Series Models:

Rotate the driver retainer (869314) 90° or 1/4 turn in either direction to remove the chisel (see illustration below). Rotate the driver retainer back to its in-line position with the barrel after chisel replacement.



Disassembly and Assembly:

Use Apex Tool Group, LLC or Apex Tool Group GmbH & Co. OHG's lightweight air tool oil 500021 (available in quantities shown in the following chart) or an SAE-5 lightweight spindle oil.

B1-C-BV Pistol Grip Models:

Should if be necessary to replace the throttle valve casing (832054), thread a 7/16-20 bolt into the casing and using a suitable puller, remove it from the handle. Refer to Illustration “C”.

Inspect Parts:

Clean and inspect all parts for excessive wear or damage and replace as necessary with genuine Cleco replacement parts. Replace all o-rings and seals whenever the tool is disassembled.

Common issues to look for:

- Worn out retainer buffer (833527), used in the B1 series tools. This can be caused by operating the tool without any resistance against the chisel.
- Excessive wear in the tool nose.
- Worn or scored plunger (832373 or 832944) usually caused by foreign particles entering the tool.
- Worn or scored bore in the barrel sleeve (832700 or 832943) caused by foreign particles entering the tool.

Handle Assembly:

If the handle does not position as desired in relationship to the chisel position, one or more handle positioning shims (832947) may be placed between the valve assembly and the handle. Refer to Illustrations “A”, “B”, and “C”.

Use one shim for about every 30° desired. Always tighten the handle into the barrel until the valve assembly is tight against the barrel sleeve and then tighten the handle lock ring (832882).

After the tool is assembled, pour a few drops of 10W machine oil into the inlet bushing to ensure immediate lubrication of the tool components.

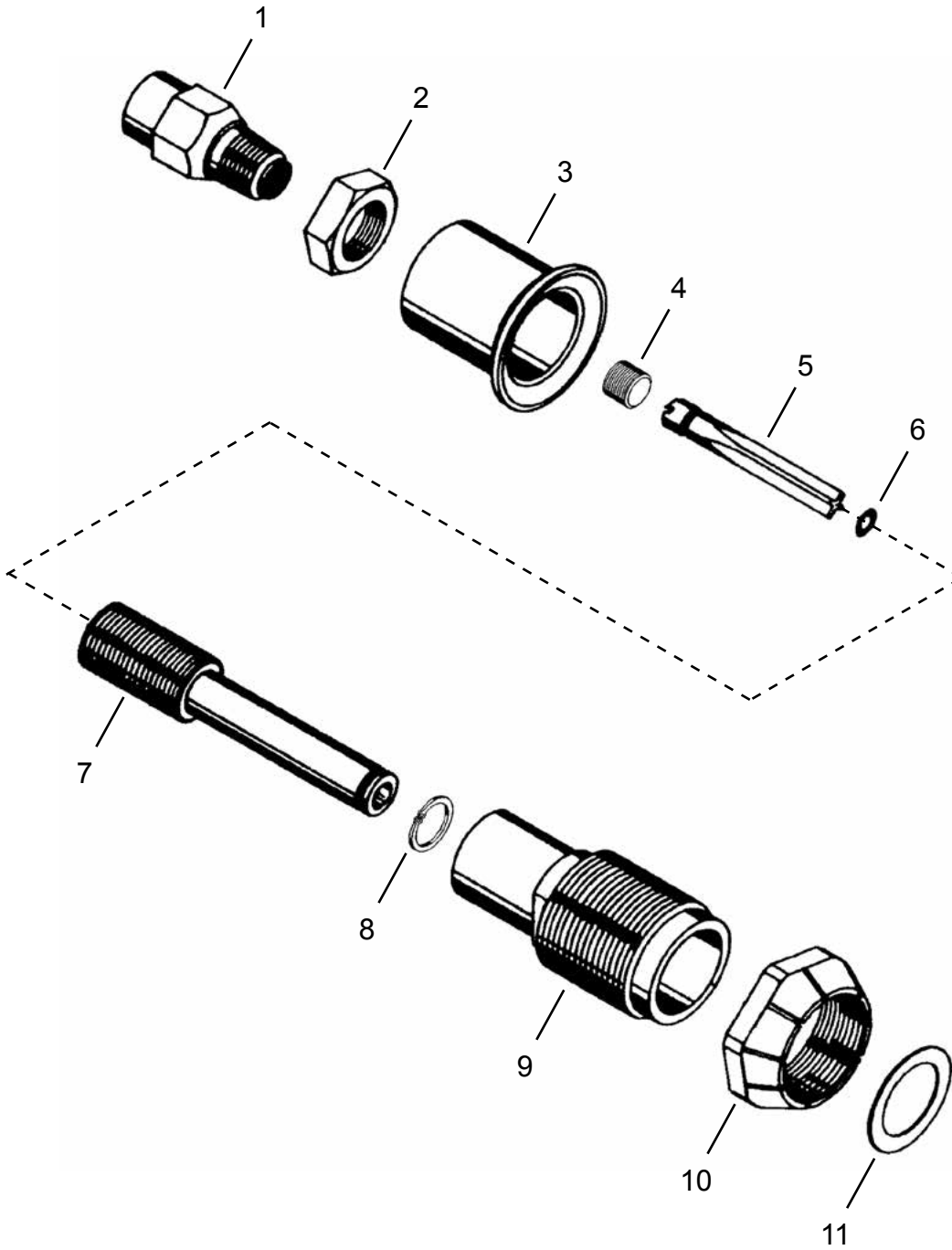
B1-C-PT Series Throttle Valve Adjustment:

To adjust the throttle valve for the desired power, loosen the throttle valve casing lock nut (843645) and screw the controlling valve handle (832610) to a position so that the desired blow is delivered when the handle is fully compressed. Tighten the throttle valve casing lock nut to secure the controlling valve handle in position. Refer to Illustration “A”.

Cleco®
Inline Handle - Push-Pull Start

Throttle Type:
PT Series

“A”



Inline Handle - Push-Pull Start

Illustration "A": Inline Handle, Push-Pull Start

Ref	Number	#	X	EN
				Description
--	831219	1		Handle Assembly (includes Ref. 1-10)
1	841554	1	1	Air Inlet Bushing
2	843645	1		Throttle Valve Casing Lock Nut
3	832610	1		Control Valve Handle
4	834878	1	1	Set Screw
5	832600	1		Throttle Valve (includes Ref. 6)
6	844302	1	3	Throttle Valve O-Ring (5/32" x 9/32")
7	832095	1		Throttle Valve Casing
8	833600	1	2	Throttle Valve Casing Retaining Ring
9	832807	1		Handle
10	832882	1		Handle Lock Ring
11	832947	1	AR	Handle Positioning Shim

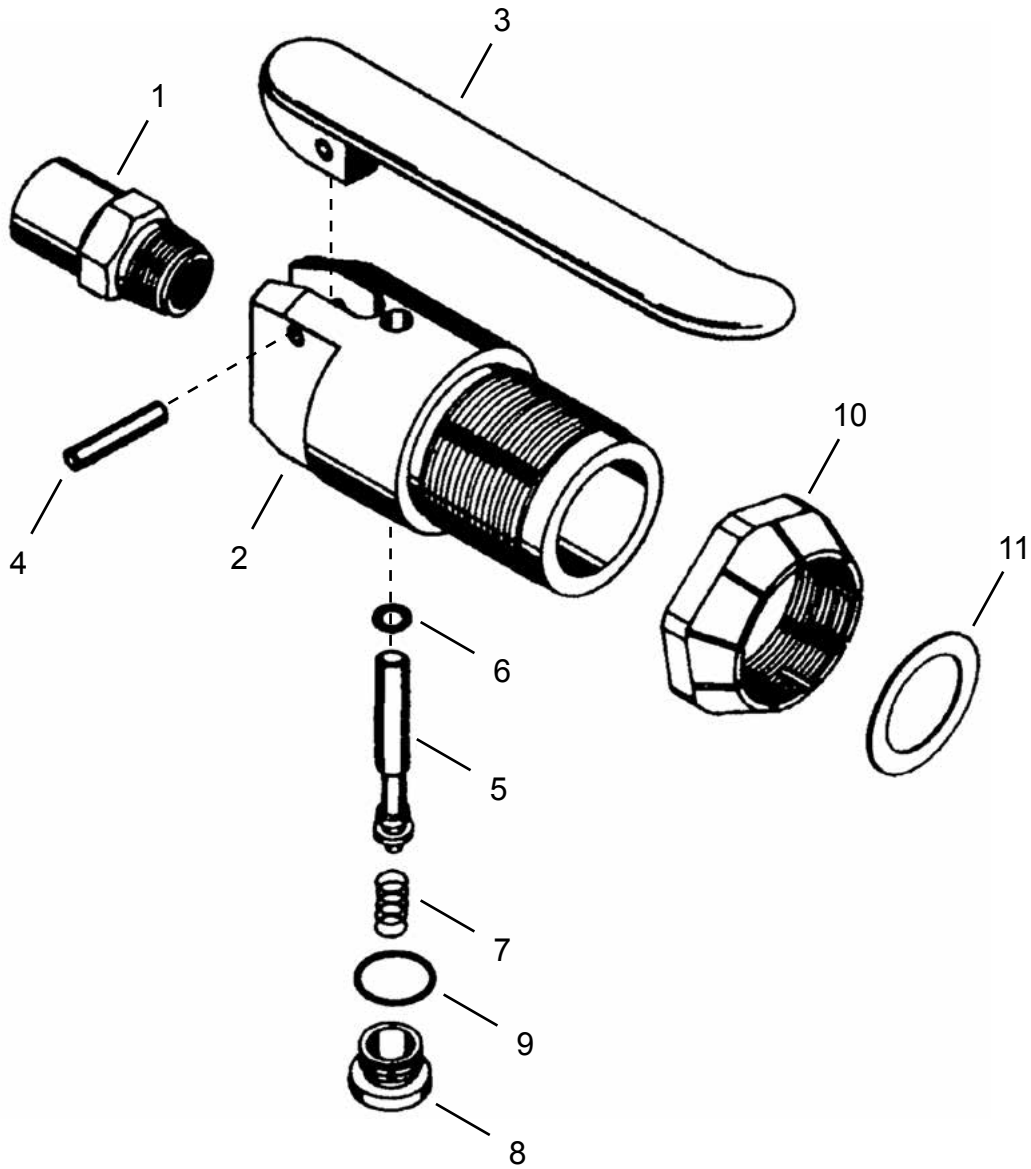
(#) Quantity

(X) Recommended Spare Parts (quantity shown based on 1-5 tools in operation)

Cleco®
Inline Handle - Lever Throttle

“B”

Throttle Type:
LT Series



Inline Handle - Lever Throttle

Illustration "B": Inline, Lever Throttle

Ref	Number	#	X	EN
				Description
--	861731	1		Handle Assembly (includes Ref. 1-14)
1	841553	1	1	Air Inlet Bushing
2	869310	1		Handle
3	834780	1	1	Throttle Lever
4	834848	1	2	Throttle Lever Pin
5	834782	1		Throttle Valve (includes Ref. 6)
6	844302	1	3	Throttle Valve O-Ring (5/32" x 9/32")
7	832078	1	3	Throttle Valve Spring
8	832207	1		Throttle Valve Cap (includes Ref. 9)
9	844307	1	3	O-Ring (.364 I.D.)
10	832882	1		Handle Lock Ring
11	832947	1	AR	Handle Positioning Shim

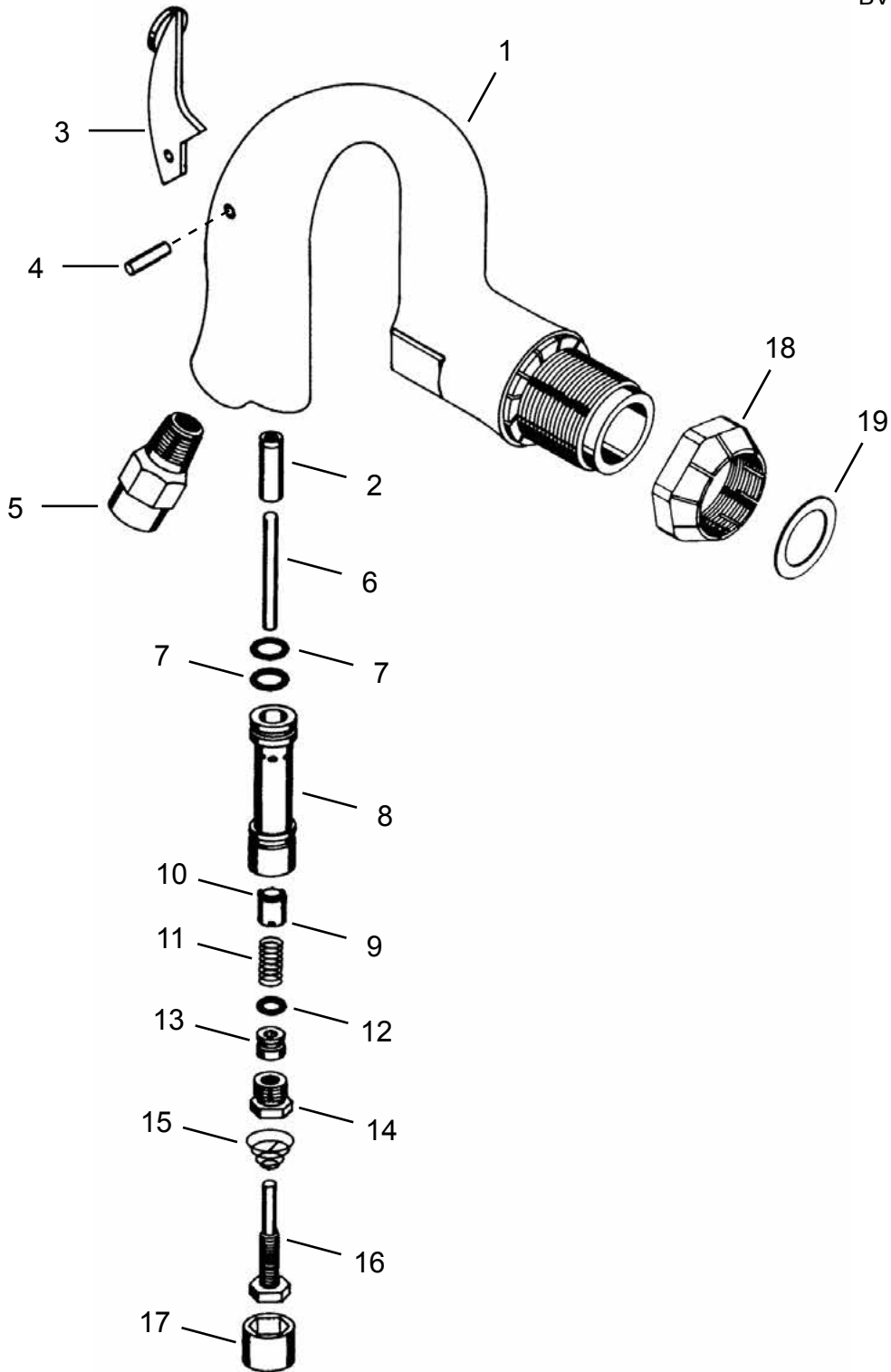
(#) Quantity

(X) Recommended Spare Parts (quantity shown based on 1-5 tools in operation)

Cleco®
Pistol Grip Handle - Lever Throttle

Throttle Type:
BV Series

“C”



Pistol Grip Handle - Lever Throttle

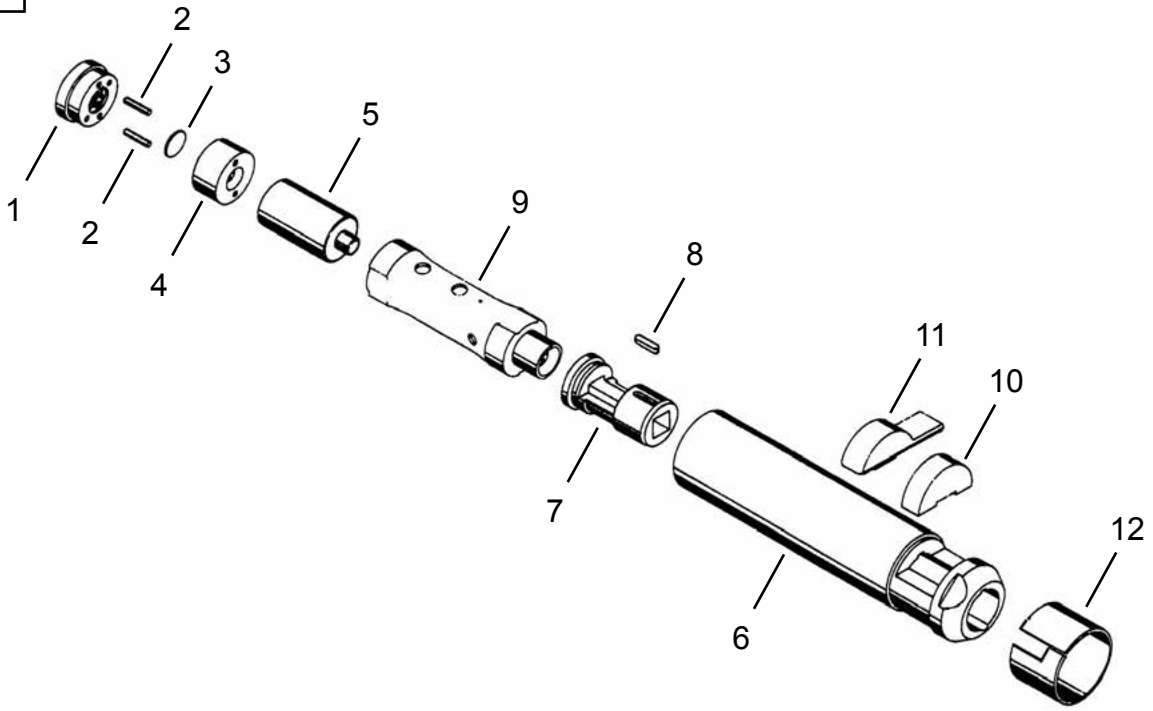
Illustration "C": Pistol Grip, Lever Throttle

Ref	Number	#	X	EN
				Description
--	831121	1		Handle Assembly (includes Ref. 1-18)
1	832948	1		Handle (includes Ref. 2)
2	832211	1		Throttle Valve Pin Bushing
3	832148	1	1	Throttle Lever
4	832128	1	1	Throttle Lever Pin
5	841554	1	1	Air Inlet Bushing
6	844767	1		Throttle Valve Pin
7	844307	2	6	Throttle Valve Casing O-Ring (3/8" x 1/2")
8	832054	1		Throttle Valve Casing
9	832091	1		Throttle Valve (includes Ref. 10)
10	844301	1	3	Throttle Valve O-Ring (1/8" x 1/4")
11	843262	1	3	Throttle Valve Spring
--	831411	1		Handle Assembly (includes Ref. 12-17)
12	844305	1	3	Nylon Sleeve O-Ring (1/4" x 3/8")
13	865992	1		Nylon Sleeve
14	833571	1		Regulating Valve Cap
15	833583	1	3	Regulating Valve Spring
16	833616	1		Regulating Valve Adjusting Screw
17	832834	1		Regulating Valve Lock Nut
18	832882	1		Handle Lock Ring
19	832947	1	AR	Handle Positioning Shim

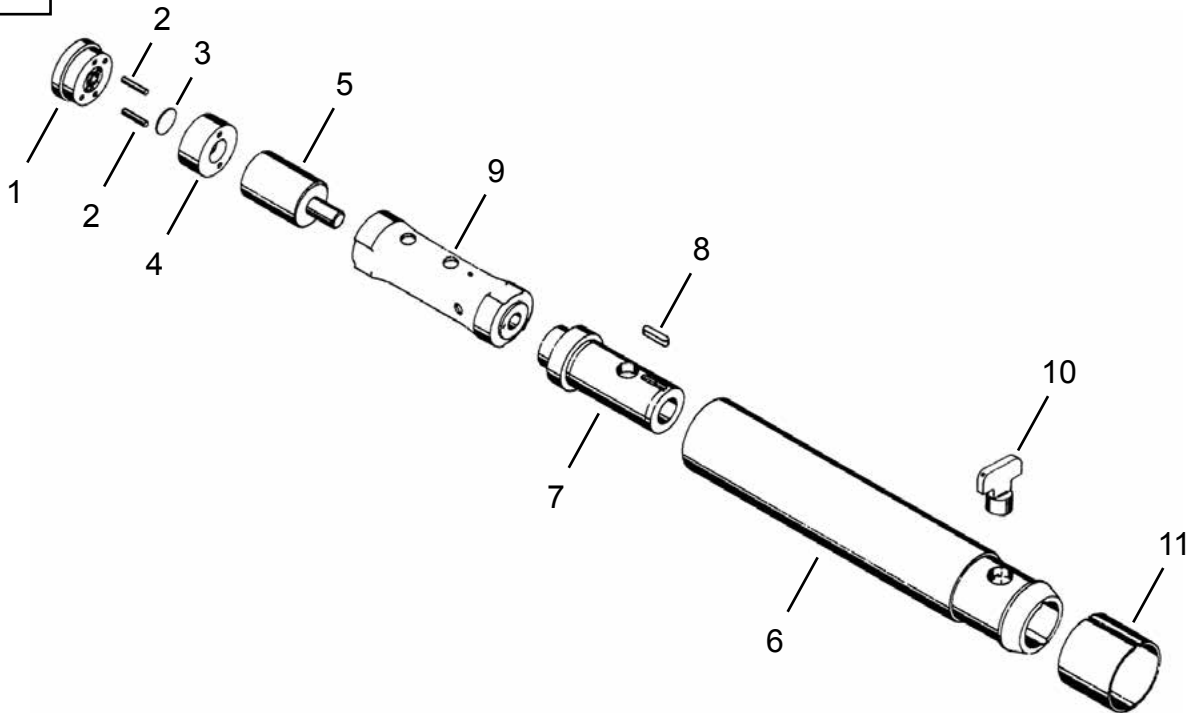
(#) Quantity

(X) Recommended Spare Parts (quantity shown based on 1-5 tools in operation)

“D” B1-C Series Scaler



“E” BR-C Series Scaler



Cleco®
Scaler Barrel Assemblies

823108EN
12/31/2015

Illustration "D": B1-C Barrel Assembly

Ref	Number	#	X	EN
				Description
1	832173	1		Valve Block Button
2	844652	2	4	Valve Block Pin
3	832196	1	1	Valve
4	832508	1		Valve Block
5	832373	1		Plunger
6	861735	1		Barrel Assembly (includes Ref. 7-9)
7	832963	1		Tool Nose
8	842801	1	3	Tool Nose Key
9	832700	1		Barrel Sleeve
10	833527	1		Retainer Buffer
11	832956	1		Driver Retainer
12	832554	1		Retainer Clip

(#) Quantity

(X) Recommended Spare Parts (quantity shown based on 1-5 tools in operation)

Illustration "E": BR-C Barrel Assembly

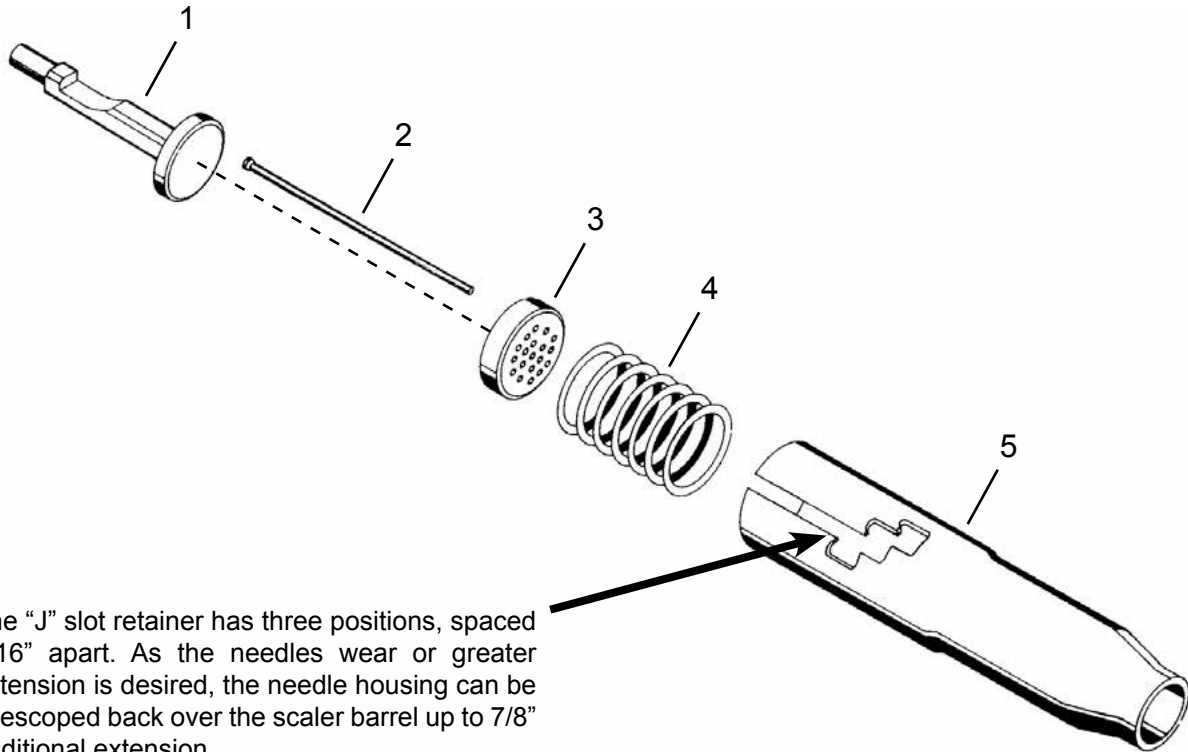
Ref	Number	#	X	EN
				Description
1	832173	1		Valve Block Button
2	844652	2	4	Valve Block Pin
3	832196	1	1	Valve
4	832508	1		Valve Block
5	832944	1		Plunger
6	861732	1		Barrel Assembly (includes Ref. 7-9)
7	832945	1		Tool Nose
8	842801	1	3	Tool Nose Key
9	832943	1		Barrel Sleeve
10	869314	1		Driver Retainer
11	869315	1		Retainer Clip

(#) Quantity

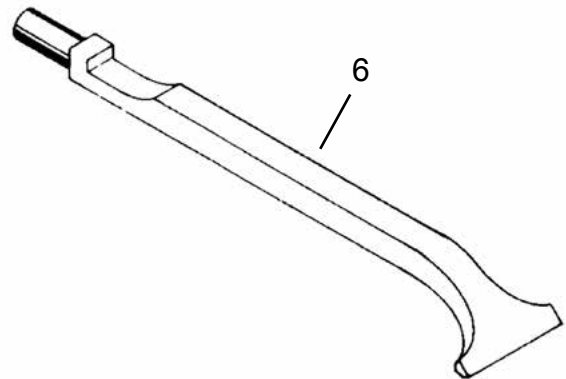
(X) Recommended Spare Parts (quantity shown based on 1-5 tools in operation)

Cleco®
Needle Scaler Assembly

“F”



The “J” slot retainer has three positions, spaced $7/16$ ” apart. As the needles wear or greater extension is desired, the needle housing can be telescoped back over the scaler barrel up to $7/8$ ” additional extension



Cleco®

Needle Scaler Assembly

823108EN
12/31/2015

Illustration "F": Needle Scaler Attachment

Ref	Number	#	X	EN
				Description
--	Table "F"	1		Needle Scaler Assembly (includes Ref. 1-7)
1	Table "F"	1		Needle Driver
2	834043	19	19	Needle (5") - Standard Equipment
	834024	19	19	Needle (7") - Optional Equipment
3	834046	1		Needle Holder
4	834044	1	3	Needle Holder Spring
5	Table "F"	1		Needle Tube
6	Table "F1"	1		Chisel (B1-C series models)
	Table "F2"	1		Chisel (BR-C series models)

(#) Quantity

(X) Recommended Spare Parts (quantity shown based on 1-5 tools in operation)

Table "F"

Ref.	Description	#	B1-C Round	#	B1-C Rectangular	#	BR-C Round	#	BR-C Rectangular
--	Needle Scaler Assembly	1	831322	1	831340	1	861734	1	861733
1	Needle Driver	1	834045	1	834045	1	869316	1	869316
5	Needle Tube	1	834779	1	834620	1	834779	1	834620

Table "F1" : B1-C Optional Scaler Chisels (Safety Retainer Type)

Description	Size	Overall Length	Cutting Edge Dimensions	Part Number
Hardened Blank	1/2" Square	7-1/2"	-----	839052
Hardened Blank	1/2" Square	12"	-----	839053
Hardened Blank	1/2" Square	18"	-----	839054
Flat Chisel	1/2" Square	7-1/2"	3/4"	839061
Flat Chisel	1/2" Square	12"	3/4"	839341
Flat Chisel	1/2" Square	18"	3/4"	839335
Flat Chisel	1/2" Square	8"	1-1/2"	839467
Spoon Chisel	1/2" Square	7-1/4"	1-3/8"	839050 *
Spoon Chisel	1/2" Square	12"	1-3/8"	839299
Spoon Chisel	1/2" Square	18"	1-3/8"	839334
Spoon Chisel	1/2" Square	7-1/4"	1"	839740

* Note: 839050 is standard equipment

Table "F2" : BR-C Optional Scaler Chisels (Safety Retainer Type)

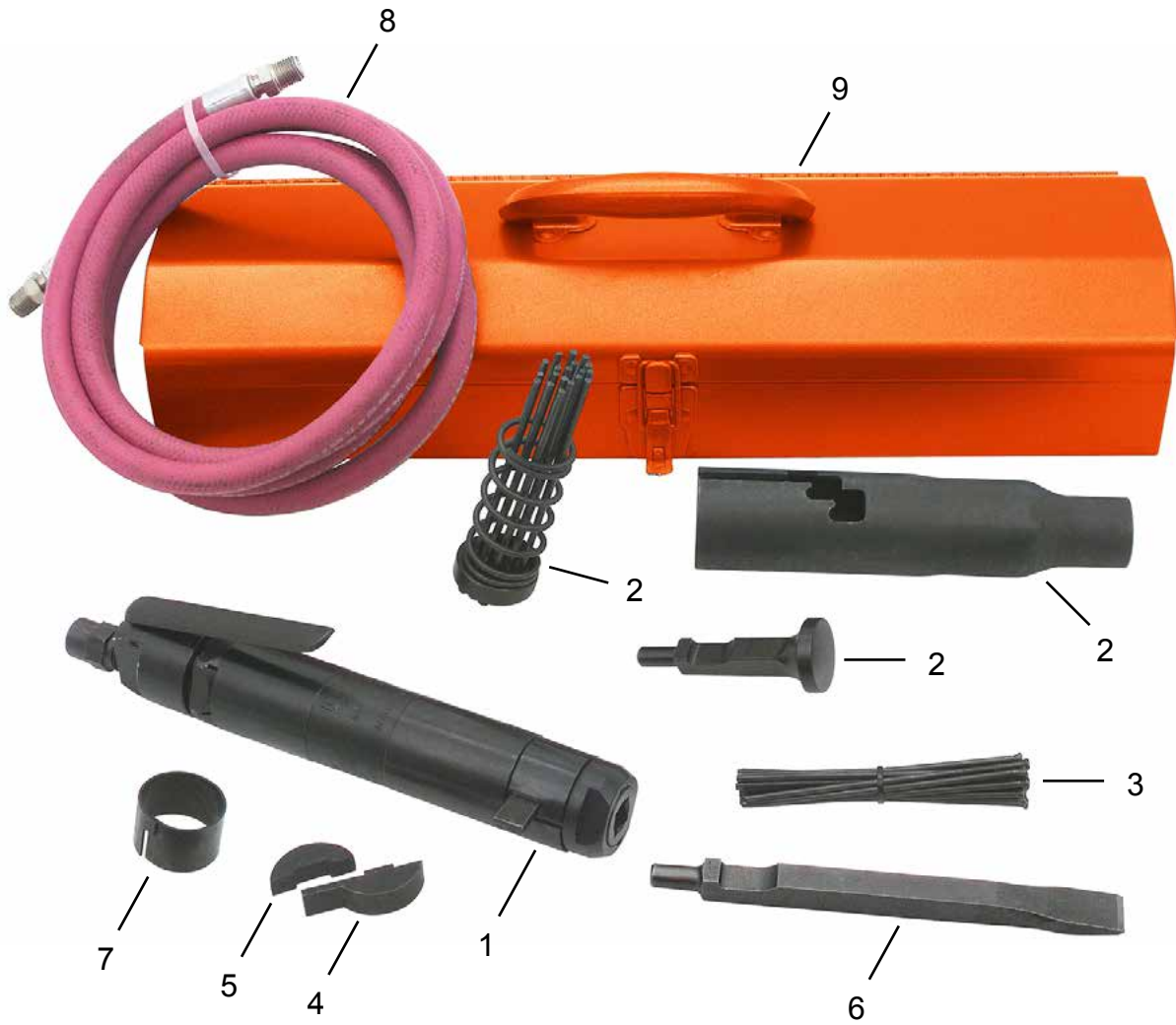
Description	Overall Length	Cutting Edge Dimensions	Part Number
Blank	6-1/2"	-----	829172
Blank	7-1/2"	-----	829173
Short Wide Blade	4-3/8"	1-1/4" x 1/8"	829167
Narrow Blade	3-7/8"	5/8" x 3/32"	829168
Long Wide Blade	8"	1-3/4" x 3/32"	829165
Cold	8-1/2"	3/4" x 3/32"	829150
Scaling	9"	1-1/4" x 3/32"	829301
Spoon	7-1/2"	1-3/8" x 3/32"	829310 *

* Note: 829310 is standard equipment

Cleco®
Needle Scaler Kit

“G”

Model: B1-CNB-LT-RD-K



Cleco®
Needle Scaler Kit

823108EN
12/31/2015

Illustration "G": Needle Scaler Kit

Ref	Number	#	X	EN
				Description
1	B1-C-LT	1		Needle Scaler (Inline, Lever Throttle)
2	831322	1		Needle Tube Assembly
3	834043	19	19	Needle (5") - Standard Equipment
	834024	19	19	Needle (7") - Optional Equipment
4	832956	1		Chisel Retainer
5	833527	1		Retainer Buffer
6	839051	1		Flat Chisel (7")
7	832554	1		Retainer Clip
8	869723	1		Air Supply Hose (1/4" NPT Fittings, 5/16" I.D., 8' Long)
9	834047	1		Steel Storage Box

(#) Quantity

(X) Recommended Spare Parts (quantity shown based on 1-5 tools in operation)

POWER TOOLS SALES & SERVICE CENTERS

Please note that all locations may not service all products.

Contact the nearest Apex Tool Group Sales & Service Center for the appropriate facility to handle your service requirements.

NORTH AMERICA | SOUTH AMERICA

Detroit, Michigan

Apex Tool Group
2630 Superior Court
Auburn Hills, MI 48236
Phone: +1 (248) 393-5640
Fax: +1 (248) 391-6295

Lexington, South Carolina

Apex Tool Group
670 Industrial Drive
Lexington, SC 29072
Phone: +1 (800) 845-5629
Phone: +1 (919) 387-0099
Fax: +1 (803) 358-7681

Louisville, Kentucky

Apex Tool Group
1000 Glengarry Drive
Suite 150
Fairdale, KY 40118
Phone: +1 (502) 708-3400
apexpowertools.com/service

Canada

Apex Tool Canada, Ltd.
7631 Bath Road
Mississauga, Ontario L4T 3T1
Canada
Phone: (866) 691-6212
Fax: (905) 673-4400

Mexico

Apex Tool Group
Manufacturing México
S. de R.L. de C.V.
Vialidad El Pueblito #103
Parque Industrial Querétaro
Querétaro, QRO 76220
Mexico
Phone: +52 (442) 211 3800
Fax: +52 (800) 685 5560

Brazil

Apex Tool Group
Ind. Com. Ferram, Ltda.
Av. Liberdade, 4055
Zona Industrial Iporanga
Sorocaba, São Paulo
CEP# 18087-170
Brazil
Phone: +55 15 3238 3820
Fax: +55 15 3238 3938

EUROPE | MIDDLE EAST | AFRICA

England

Apex Tool Group
GmbH & Co. OHG
C/O Spline Gauges
Piccadilly, Tamworth
Staffordshire B78 2ER
United Kingdom
Phone: +44 1827 8727 71
Fax: +44 1827 8741 28

France

Apex Tool Group S.A.S.
25 rue Maurice Chevalier
B.P. 28
77831 Ozoir-La-Ferrière
Cedex, France
Phone: +33 1 64 43 22 00
Fax: +33 1 64 43 17 17

Germany

Apex Tool Group
GmbH & Co. OHG
Industriestraße 1
73463 Westhausen
Germany
Phone: +49 (0) 73 63 81 0
Fax: +49 (0) 73 63 81 222

Hungary

Apex Tool Group
Hungária Kft.
Platánfa u. 2
9027 Győr
Hungary
Phone: +36 96 66 1383
Fax: +36 96 66 1135

ASIA PACIFIC

Australia

Apex Tool Group
519 Nurigong Street, Albury
NSW 2640
Australia
Phone: +61 2 6058 0300

China

Apex Power Tool Trading
(Shanghai) Co., Ltd
Building A8, No. 38
Dongsheng Road
Pudong, Shanghai
China 201201
Phone: +86 21 60880320
Fax: +86 21 60880298

India

Apex Power Tools India
Private Limited
Gala No. 1, Plot No. 5
S. No. 234, 235 & 245
Indialand Global
Industrial Park
Taluka-Mulsi, Phase I
Hinjawadi, Pune 411057
Maharashtra, India
Phone: +91 020 66761111

Japan

Apex Tool Group Japan
Korin-Kaikan 5F,
3-6-23 Shibakoen, Minato-Ku,
Tokyo 105-0011, JAPAN
Phone: +81-3-6450-1840
Fax: +81-3-6450-1841

Korea

Apex Tool Group Korea
#1503, Hibrand Living Bldg.,
215 Yangjae-dong,
Seocho-gu, Seoul 137-924,
Korea
Phone: +82-2-2155-0250
Fax: +82-2-2155-0252

Cleco®

Apex Tool Group, LLC

1000 Lufkin Road
Apex, NC 27539
Phone: +1 (919) 387-0099
Fax: +1 (919) 387-2614
www.apexpowertools.com