

Cleco[®]
Dotco[®]

Parts Manual
45-8011EN
02/22/19

10-20 Series
Heavy Duty Inline Grinders and Drills



For additional product information visit our website at <http://www.ClecoTools.com>

Cleco Dotco®

Nomenclature and Specifications

10	X	2	0	XX	-	XX	XX	LH
<p><u>Product Type</u> 10 = Aluminum Housing Grinder</p> <p><u>Throttle Type</u> B = Button Throttle K = Lock-Off Lever Throttle L = Locking Lever Throttle S = Locking Lever Throttle N = No Throttle *</p> <p><u>Motor Size</u> 2 = 0.6 hp</p> <p><u>Handle Style</u> 0 = Straight</p> <p><u>Speed Options (RPM)</u> Rear Exhaust 80 = 25,000 81 = 20,000 82 = 18,000</p> <p><u>Termination Code</u> 01 = 200 Series Collet (1/4") 16 = Type 1 Wheel 36 = 300 Series Collet (1/4")</p> <p><u>Optional Collet (no extra cost)</u> 24 = 200 Series Collet (3/8")</p> <p><u>Option</u> LH = Left Hand Rotation</p>								

* Note: These models will start with applied air and are intended for fixtured applications.

The original language of this manual is English.

Product Safety Information:

Intended Use:

These pneumatic grinders are to be used only for removing material by utilizing appropriate abrasive wheels, rotary files, or other material removal cutting devices.

For additional product safety information refer to Apex Tool Group, LLC or Apex Tool Group GmbH & Co. OHG document GS-2007, General Safety Pneumatic Grinders.



These grinders must not be modified in any manner unless approved in writing by Apex Tool Group, LLC or Apex Tool Group GmbH & Co. OHG. All safety devices must be properly installed and maintained in good working order.

EC Declaration of Conformity:

We affirm that this machine is in accordance with the following EC regulations (2006/42/EC). Applied harmonized standards are ISO 12100:2010-11.

The name, job function and address of the person authorized to compile the technical file.

Mr. Vishnu Irigreddy
Director of Global R&D- Mechanical Engineering
Apex Tool Group
670 Industrial Drive
Lexington, SC 29072

I. V. Vishnu Varadhan

Signature: Vishnu Irigreddy
Date: 12/15/2014

Noise and Vibration:

- 10B20 Series Sound Level: ≤ 85 dB(A)
- 10K20 Series Sound Level: ≤ 85 dB(A)
- 10L20 Series Sound Level: ≤ 85 dB(A)
- 10S20 Series Sound Level: ≤ 85 dB(A)
- 10N20 Series Sound Level: ≤ 85 dB(A)

- 10B20 Series Vibration: < 2.5 m/s²
- 10K20 Series Vibration: < 2.5 m/s²
- 10L20 Series Vibration: < 2.5 m/s²
- 10S20 Series Vibration: < 2.5 m/s²
- 10N20 Series Vibration: < 2.5 m/s²

Air Line Lubrication:

Use Apex Tool Group, LLC or Apex Tool Group GmbH & Co. OHG's lightweight air tool oil (available in quantities shown in the following chart) or an SAE-5 lightweight spindle oil.

Part No.	Packaged	Designation
540397	1 Quart (0.94 liter)	Airlube 10W/NR-420LB DR
533485	1 US Gallon (3.78 liter)	Airlube 10W/NR-420LB DR

Air Supply Line:

Parameter	Description
Air Hose	Minimum inside diameter: 1/4" (6.4mm) Maximum length: 8.0' (2.4 m)
Working pressure range	Performance rated at: 90 psi (620 kPa)
Compressed air	Air quality according to ISO 8573-1, quality class 2.4.3 The compressed air must be clean and dry.

Service and Repair:

Tool service and repair should be performed by an authorized Apex Tool Group, LLC or Apex Tool Group GmbH & Co. OHG Center. Refer to the last page of this manual for locations.

Disposal:



Observe local disposal guidelines for all components of this tool and its packaging.

Copyright Protection:

Apex Tool Group, LLC or Apex Tool Group GmbH & Co. OHG reserves the right to modify, supplement or improve this document or the product without prior notice. This document may not be reproduced in any way, shape or form, in full or parts thereof, or copied to another natural or machine readable language or to a data carrier, whether electronic, mechanical, optical or otherwise without the express permission of Apex Tool Group, LLC or Apex Tool Group GmbH & Co. OHG

Cleco Dotco® Throttle Configurations

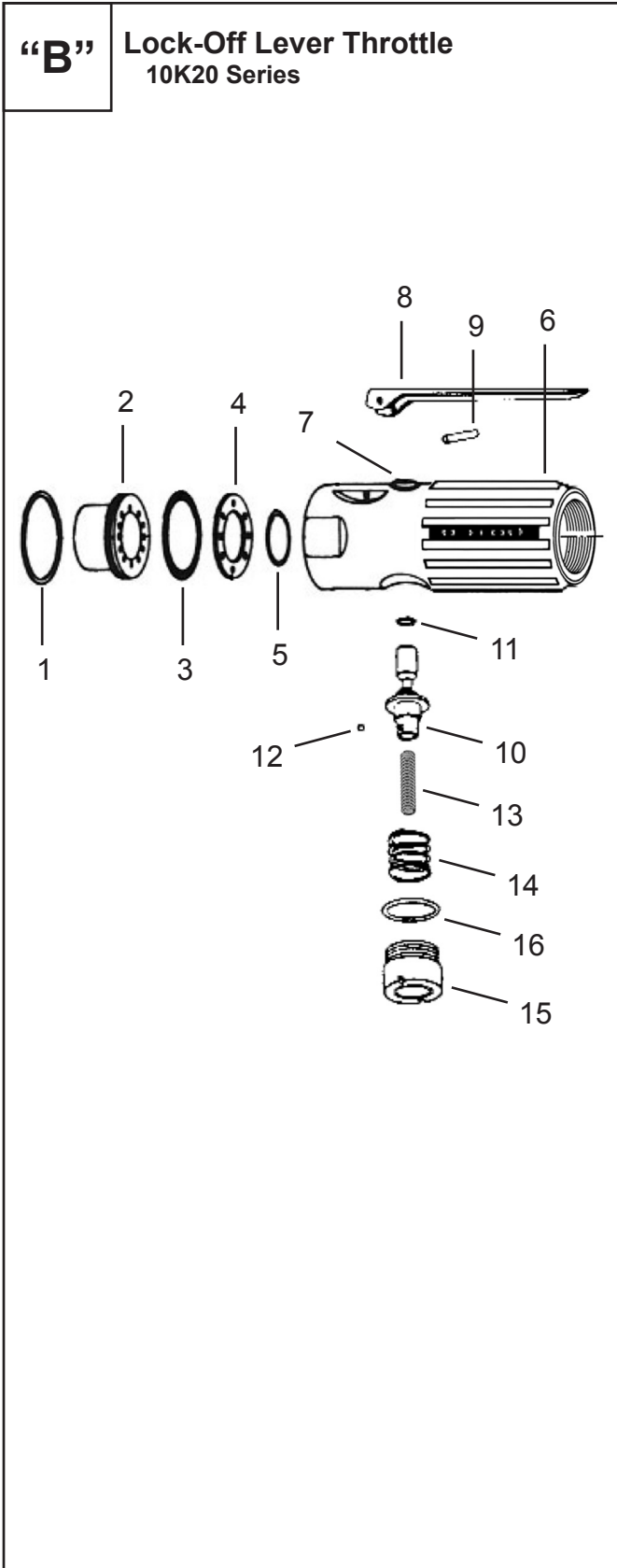
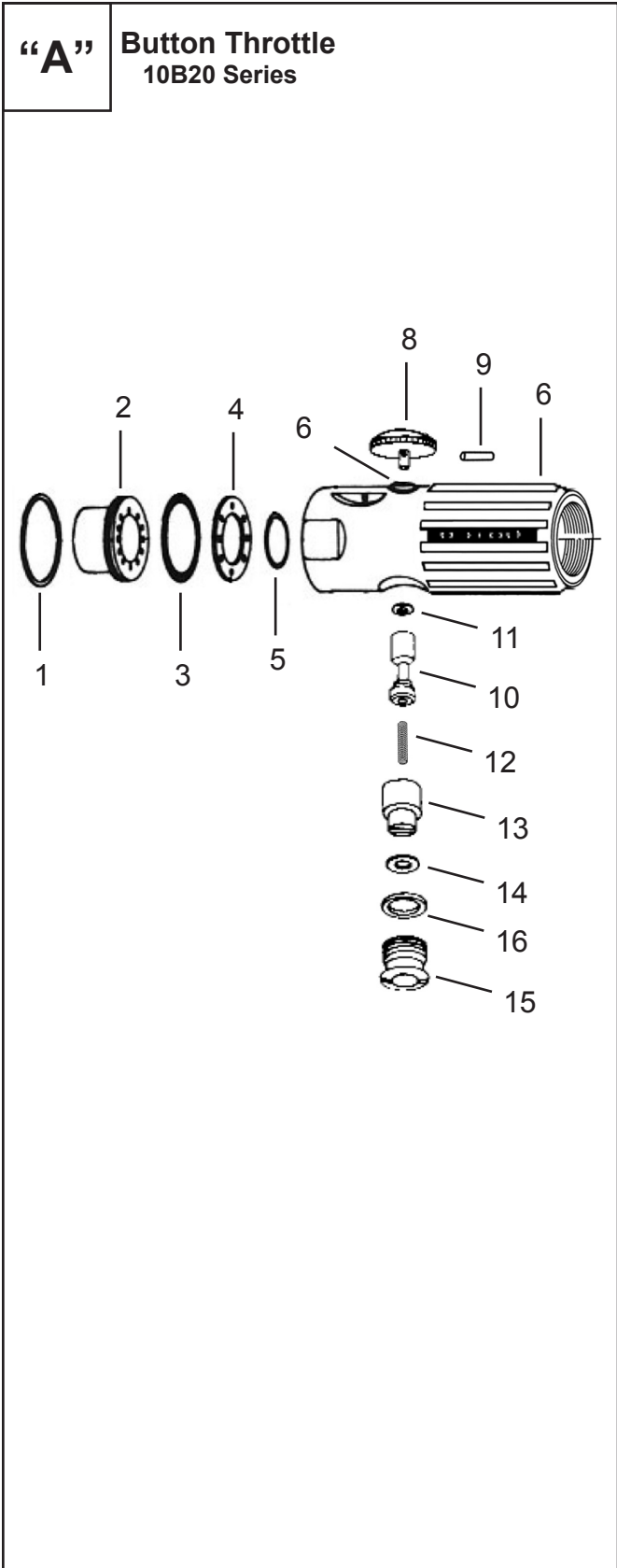


Illustration "A" - Button Throttle (B)

Ref	Number	#	X	EN
				Description
1	2690PT	1	1	Retaining Ring
2	2685	1		Muffler
3	1838PT	1	3	O-Ring
4	Table "A"	1		Baffle
5	Table "A"	1	3	Baffle O-Ring
6	2698S	1		Motor Housing (includes Ref. 7)
7	2037S	1		Valve Bushing
8	1039PT	1	2	Throttle Button
9	1055PT	1	2	Throttle Button Pin
10	2038PT	1		Valve Stem (includes Ref. 11)
11	2053PT	1	3	Valve Stem O-Ring
12	2015PT	1	3	Valve Spring
13	2011PT	1		Speed Regulator (includes Ref. 14)
14	1056PT	1	3	Speed Regulator O-Ring
15	2012PT	1		Plug Assembly (includes Ref. 16)
16	1057PT	1	3	Plug Assembly O-Ring

(#) Quantity

(X) Recommended Spare Parts (quantity shown based on 1-5 tools in operation)

Table "A"

Ref.	Description	#	10B2080	#	10B2081	#	10B2082
4	Baffle	1	-----	1	2888	1	2740PT
5	Baffle O-Ring	1	-----	1	02-1109	1	02-1109

Illustration "B" - Lock-Off Lever Throttle (K)

Ref	Number	#	X	EN
				Description
1	2690PT	1	1	Retaining Ring
2	2685	1		Muffler
3	1838PT	1	3	O-Ring
4	Table "B"	1		Baffle
5	Table "B"	1	3	Baffle O-Ring
6	2655S	1		Motor Housing (includes Ref. 7)
7	2007S	1		Valve Bushing
8	1019PT	1	2	Throttle Lever
9	1042	1	2	Throttle Lever Pin
10	2412	1		Valve Stem (includes Ref. 11)
11	2053PT	1	3	Valve Stem O-Ring
12	4180PT	2	6	Valve Stem Ball
13	2015PT	1	3	Valve Spring
14	2413PT	1	3	Valve Stem Spring
15	2411PT	1		Plug Assembly (includes Ref. 16)
16	1057PT	1	3	Plug Assembly O-Ring

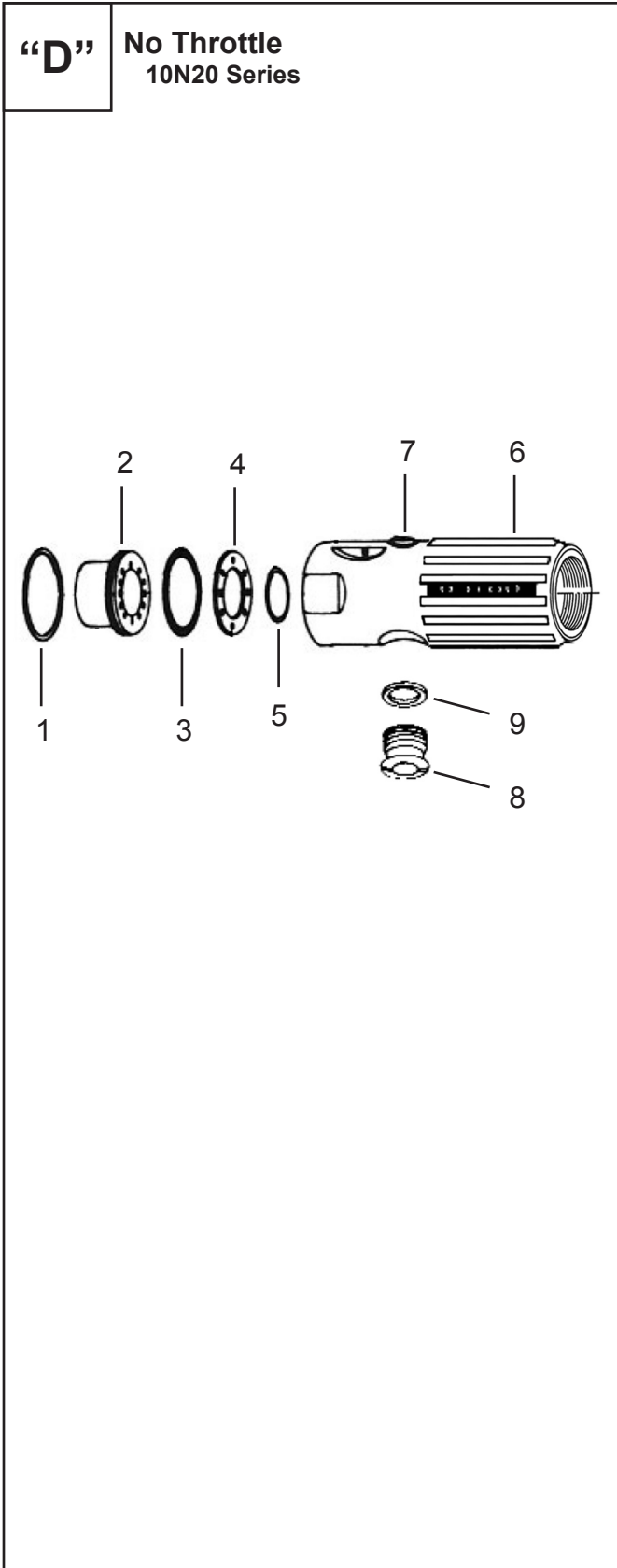
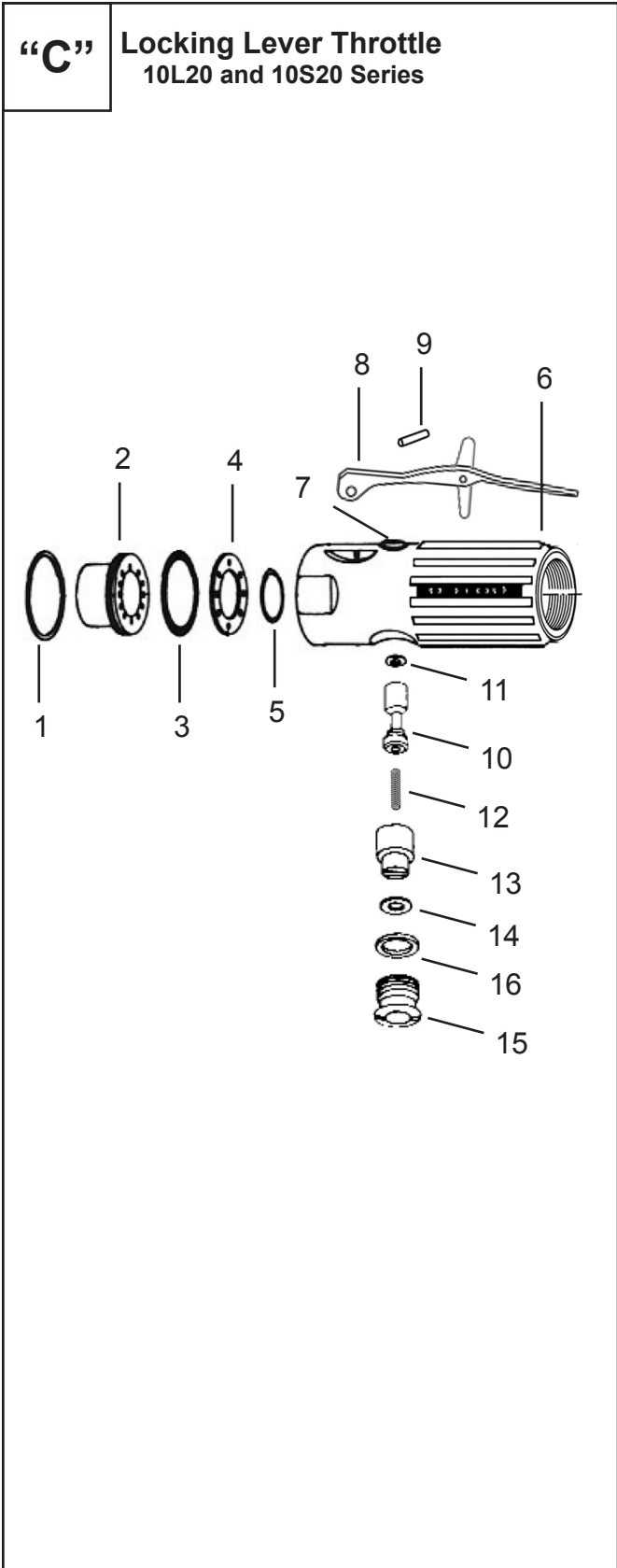
(#) Quantity

(X) Recommended Spare Parts (quantity shown based on 1-5 tools in operation)

Table "B"

Ref.	Description	#	10K2080	#	10K2081	#	10K2082
4	Baffle	1	-----	1	2888	1	2740PT
5	Baffle O-Ring	1	-----	1	02-1109	1	02-1109

Cleco Dotco® Throttle Configurations



Cleco Dotco®
Throttle Configurations

45-8011EN
02/22/19

Illustration "C" - Locking Lever Throttle (L or S)

Ref	Number	#	X	EN
				Description
1	2690PT	1	1	Retaining Ring
2	2685	1		Muffler
3	1838PT	1	3	O-Ring
4	Table "C"	1		Baffle
5	Table "C"	1	3	Baffle O-Ring
6	2655S	1		Motor Housing (includes Ref. 7)
7	2007S	1		Valve Bushing
8	01-1267	1	2	Throttle Lever
9	1042	1	2	Throttle Lever Pin
10	2008PT	1		Valve Stem (includes Ref. 11)
11	2053PT	1	3	Valve Stem O-Ring
12	2015PT	1	3	Valve Spring
13	2011PT	1		Speed Regulator (includes Ref. 14)
14	1056PT	1	3	Speed Regulator O-Ring
15	2012PT	1		Plug Assembly (includes Ref. 16)
16	1057PT	1	3	Plug Assembly O-Ring

(#) Quantity

(X) Recommended Spare Parts (quantity shown based on 1-5 tools in operation)

Table "C"

Ref.	Description	#	10L2080	#	10L2081	#	10L2082
4	Baffle	1	-----	1	2888	1	2740PT
5	Baffle O-Ring	1	-----	1	02-1109	1	02-1109

Illustration "D" - No Throttle (N)

Ref	Number	#	X	EN
				Description
1	2690PT	1	1	Retaining Ring
2	2685	1		Muffler
3	1838PT	1	3	O-Ring
4	Table "C"	1		Baffle
5	Table "C"	1	3	Baffle O-Ring
6	2640S	1		Motor Housing (includes Ref. 7)
7	2385PT	1		Valve Bushing
8	2734PT	1		Plug Assembly (includes Ref. 9)
9	1057PT	1	3	Plug Assembly O-Ring

(#) Quantity

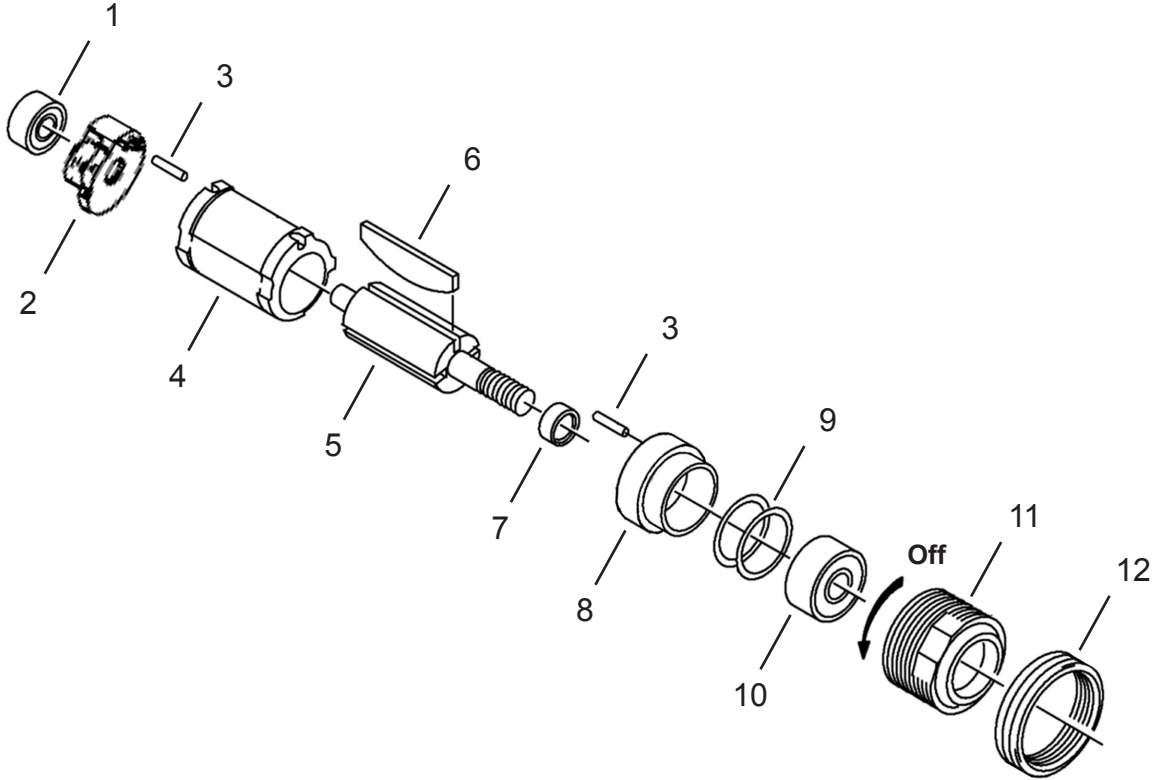
(X) Recommended Spare Parts (quantity shown based on 1-5 tools in operation)

WARNING: These models will start with applied air and are intended for fixtured applications.

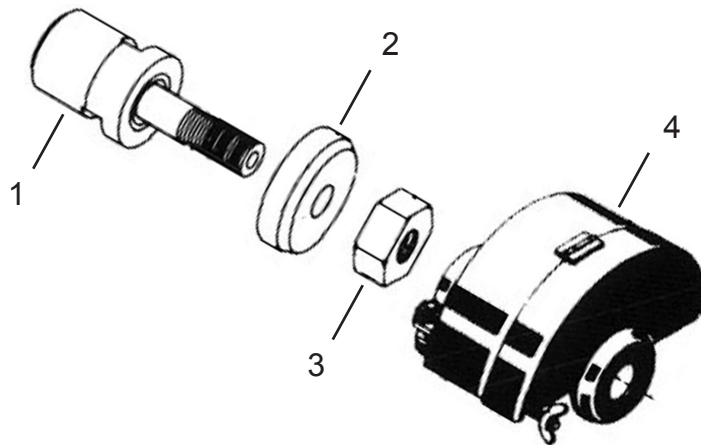
Table "D"

Ref.	Description	#	10N2080	#	10N2081	#	10N2082
4	Baffle	1	-----	1	2888	1	2740PT
5	Baffle O-Ring	1	-----	1	02-1109	1	02-1109

“E” Motor Assembly



“F” Termination -16 (Type 1 Wheel)



Cleco Dotco®
Motor Assembly and Terminations

45-8011EN
02/22/19

Illustration "E" - Motor Assembly

Ref	Number	#	X	EN
				Description
1	538PT	1	2	Ball Bearing
2	02-7148	1		Rear Bearing Plate (includes 1 Ref. 3) (RH: Right Hand Rotation Models)
	7198	1		Rear Bearing Plate (includes 1 Ref. 3) (LH: Left Hand Rotation Models)
3	1041	2	4	Locating Pin
4	2002PT	1		Cylinder (RH: Right Hand Rotation Models)
	2195PT	1		Cylinder (LH: Left Hand Rotation Models)
5	7005S	1		Rotor
6	Table "E"	4	12	Rotor Blade
7	2017PT	1		Rotor Spacer
8	2651PT	1		Front Bearing Plate (includes 1 Ref. 3) (RH: Right Hand Rotation Models)
	2518PT	1		Front Bearing Plate (includes 1 Ref. 3) (LH: Left Hand Rotation Models)
9	2488	1		Shim Packet
10	500PT	1	2	Ball Bearing
11	2445PT	1		Lock Ring
12	2585PT	1		Thread Guard

(#) Quantity

(X) Recommended Spare Parts (quantity shown based on 1-5 tools in operation)

Table "E"

Ref.	Description	#	10B2080 10K2080 10L2080 10S2080 10N2080	#	10B2081 10K2081 10L2081 10S2081 10N2081	#	10B2082 10K2082 10L2082 10S2082 10N2082
6	Rotor Blade	4	2006PT	4	2406	4	2406

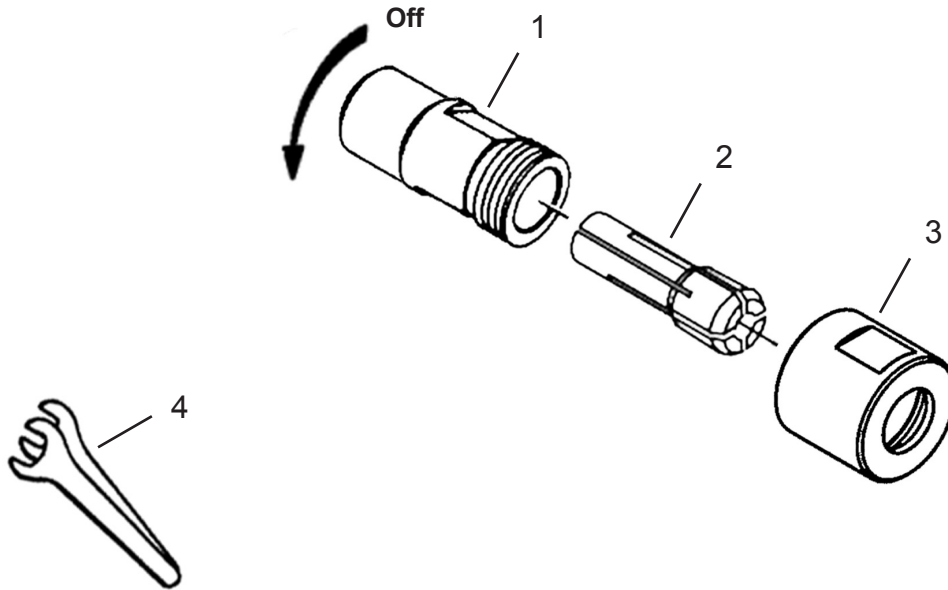
Illustration "F" - Termination 16

Ref	Number	#	X	EN
				Description
1	7577	1		Output Adapter
2	14-3052	1		Flange
3	2057PT	1	2	Nut
4	14-2595	1		Wheel Guard (3")

(#) Quantity

(X) Recommended Spare Parts (quantity shown based on 1-5 tools in operation)

“G” Termination -01 (200 Series Collet)



“H” Termination -36 (300 Series Collet)

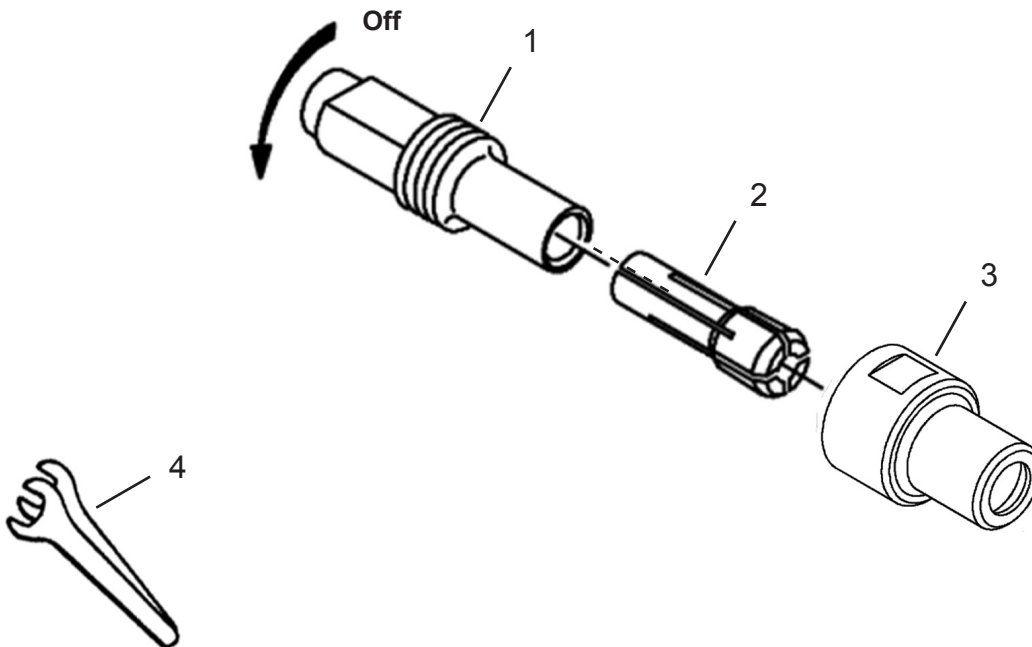


Illustration "G" - Termination 01

Ref	Number	#	X	EN	
				Description	
1	2054	1	2	Collet Chuck Body	
2	208	1	2	200 Series Standard Collet (1/4") - see Table "G" for optional collets	
3	2058PT	1	2	Collet Chuck Cap	
4	14-0809	1		Wrench (9/16")	
	14-0812	1		Wrench (3/4")	

(#) Quantity

(X) Recommended Spare Parts (quantity shown based on 1-5 tools in operation)

Table "G"

200 Series Optional Collets					
Part No.	Arbor Size	Part No.	Arbor Size	Part No.	Arbor Size
204	1/8"	208	1/4"	212	3/8"
205PT	5/32"	209	9/32"	213PT	6mm
206	3/16"	210PT	5/16"	216PT	8mm
207	7/32"	211PT	11/32"		

Illustration "H" - Termination 36

Ref	Number	#	X	EN	
				Description	
1	1400PT	1	2	Collet Chuck Body	
2	308PT	1	2	300 Series Standard Collet (1/4") - see Table "H" for optional collets	
3	208196PT	1	2	Collet Chuck Cap	
4	14-0807	1		Wrench (7/16")	
	14-0811	1		Wrench (11/16")	

(#) Quantity

(X) Recommended Spare Parts (quantity shown based on 1-5 tools in operation)

Table "H"

300 Series Optional Collets					
Part No.	Arbor Size	Part No.	Arbor Size	Part No.	Arbor Size
301PT	3/64"	305PT	5/32"	310PT	6mm
302PT	5/64"	306PT	3/16"		
303	3/32"	307PT	7/32"		
304PT	1/8"	308PT	1/4"		

POWER TOOLS SALES & SERVICE CENTERS

Please note that all locations may not service all products.

Contact the nearest Cleco® Sales & Service Center for the appropriate facility to handle your service requirements.

 Sales Center

 Service Center

NORTH AMERICA | SOUTH AMERICA

Detroit, Michigan

Apex Tool Group
2630 Superior Court
Auburn Hills, MI 48236
Phone: +1 (248) 393-5644
Fax: +1 (248) 391-6295

Lexington, South Carolina

Apex Tool Group
670 Industrial Drive
Lexington, SC 29072
Phone: +1 (800) 845-5629
Phone: +1 (919) 387-0099
Fax: +1 (803) 358-7681

Mexico

Apex Tool Group
Vialidad El Pueblito #103
Parque Industrial Querétaro
Querétaro, QRO 76220
Mexico
Phone: +52 (442) 211 3800
Fax: +52 (800) 685 5560

Brazil

Apex Tool Group
Av. Liberdade, 4055
Zona Industrial Iporanga
Sorocaba, São Paulo
CEP# 18087-170
Brazil
Phone: +55 15 3238 3870
Fax: +55 15 3238 3938

EUROPE | MIDDLE EAST | AFRICA

England

Apex Tool Group GmbH
C/O Spline Gauges
Piccadilly, Tamworth
Staffordshire B78 2ER
United Kingdom
Phone: +44 1827 8727 71
Fax: +44 1827 8741 28

France

Apex Tool Group SAS
25 Avenue Maurice Chevalier - ZI
77330 Ozoir-La-Ferrière
France
Phone: +33 1 64 43 22 00
Fax: +33 1 64 43 17 17

Germany

Apex Tool Group GmbH
Industriestraße 1
73463 Westhausen
Germany
Phone: +49 (0) 73 63 81 0
Fax: +49 (0) 73 63 81 222

Hungary

Apex Tool Group
Hungária Kft.
Platánfa u. 2
9027 Győr
Hungary
Phone: +36 96 66 1383
Fax: +36 96 66 1135

ASIA PACIFIC

Australia

Apex Tool Group
519 Nurigong Street, Albury
NSW 2640
Australia
Phone: +61 2 6058 0300

China

Apex Power Tool Trading
(Shanghai) Co., Ltd.
2nd Floor, Area C
177 Bi Bo Road
Pu Dong New Area, Shanghai
China 201203 P.R.C.
Phone: +86 21 60880320
Fax: +86 21 60880298

India

Apex Power Tool India
Private Limited
Gala No. 1, Plot No. 5
S. No. 234, 235 & 245
Indialand Global
Industrial Park
Taluka-Mulsi, Phase I
Hinjawadi, Pune 411057
Maharashtra, India
Phone: +91 020 66761111

Japan

Apex Tool Group Japan
Korin-Kaikan 5F,
3-6-23 Shibakoen, Minato-Ku,
Tokyo 105-0011, JAPAN
Phone: +81-3-6450-1840
Fax: +81-3-6450-1841

Korea

Apex Tool Group Korea
#1503, Hibrand Living Bldg.,
215 Yangjae-dong,
Seocho-gu, Seoul 137-924,
Korea
Phone: +82-2-2155-0250
Fax: +82-2-2155-0252

Cleco®

Dotco®

Apex Tool Group, LLC

Phone: +1 (800) 845-5629
Phone: +1 (919) 387-0099
Fax: +1 (803) 358-7681
www.ClecoTools.com
www.ClecoTools.de