

**Cleco<sup>®</sup>**

**Parts Manual**

**SP12-1116**

2025-01 | REV.B

**NeoTek<sup>™</sup>**

**50ESN Series**

**Corded Electric Assembly Tool**



For additional product information visit our website at <http://www.ClecoTools.com>

Copyright © Apex Tool Group, 2025

No part of this document may be reproduced in any way or in any form, in whole or in part, or in a natural or machine-readable language, or transmitted on electronic, mechanical, optical, or other media, without the express permission of the Apex Tool Group.

### **Disclaimer**

The Apex Tool Group reserves the right to modify, supplement, or improve this document or the product without prior notice.

### **Trademark**

Cleco is a registered trademark of Apex Brands, Inc.

### **Apex Tool Group**

670 Industrial Drive  
Lexington, SC 29072

### **Manufacturer:**

Apex Tool Group GmbH  
Industriestraße 1  
73463 Westhausen, Germany

### **Importers:**

Apex Tool Group, LLC  
670 Industrial Drive  
Lexington, South Carolina 29072, USA

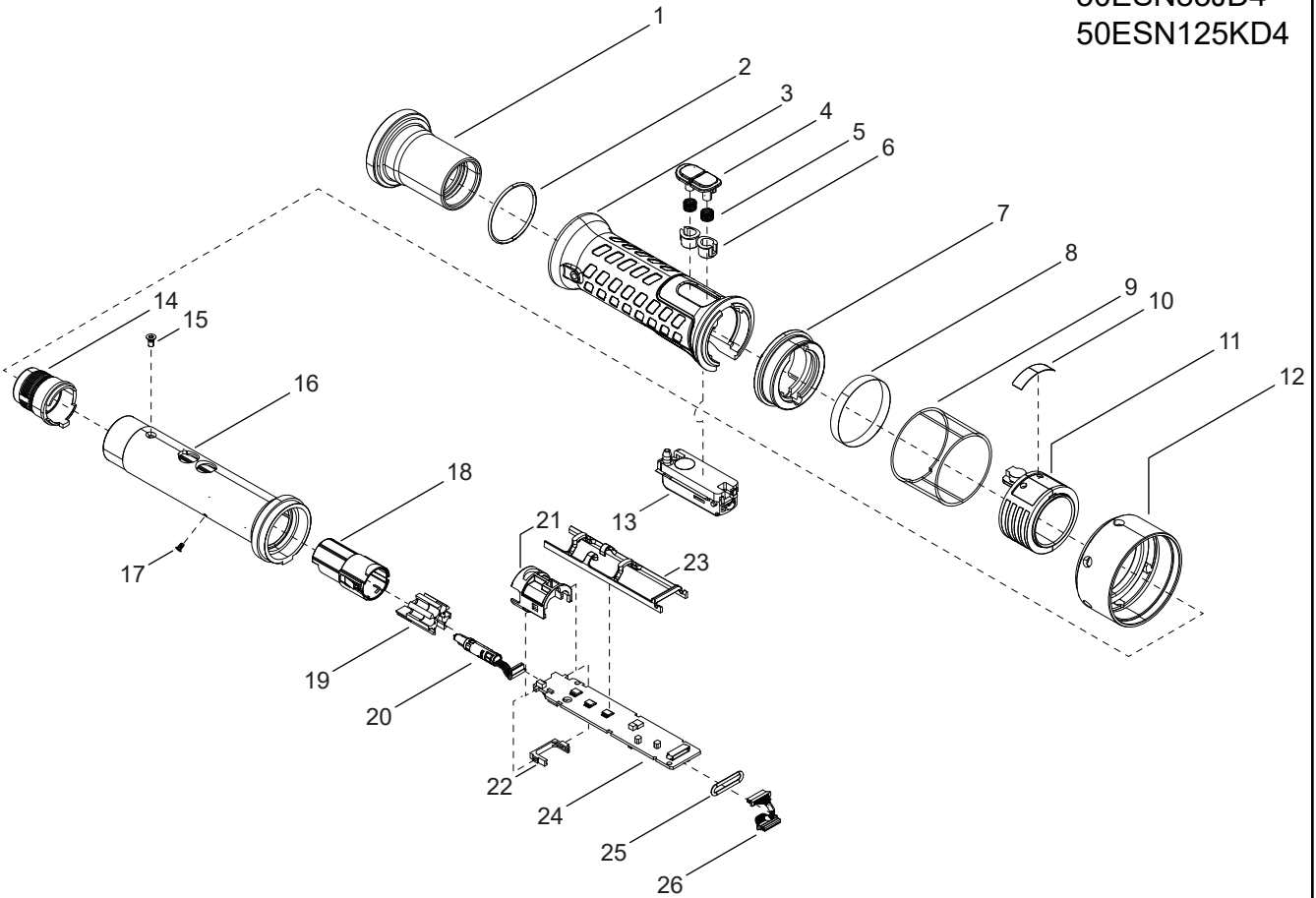
### **Further Document for Safety Instructions**





No.	Document type
TM12-1109	Instruction Manual 30 & 50 & 70 Series NeoTek



**01**

MODELS  
 50ESN28FD3  
 50ESN43GD3  
 50ESN65HD4  
 50ESN85JD4  
 50ESN125KD4



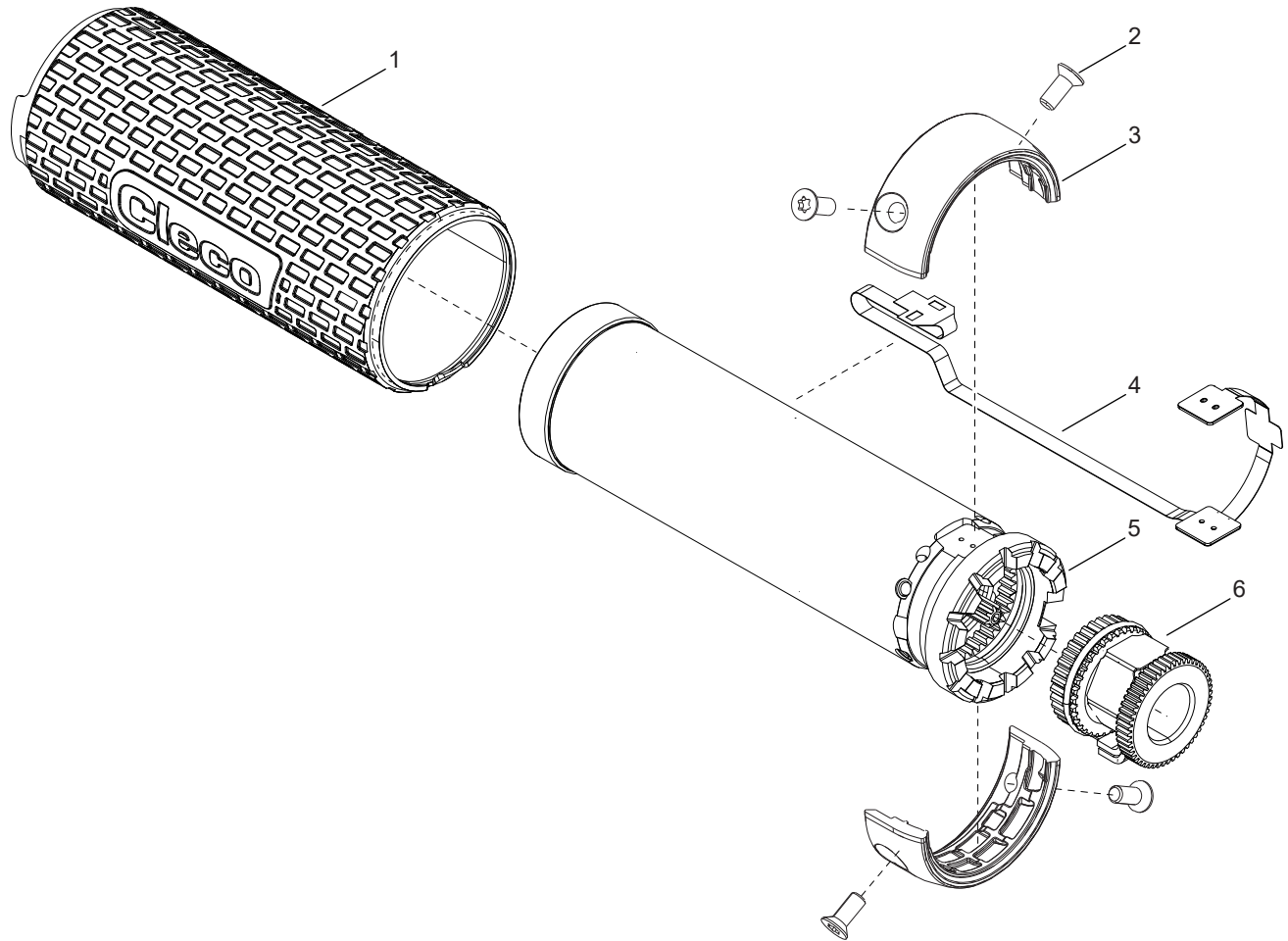
-  # 1 37 Nm
-  # 12 50.5 Nm
-  # 15 0.9 Nm
-  # 17 0.42 Nm

REF	NUMBER	#	EN
			DESCRIPTION
1	208746PT	1	Handle Nut
2	22598	1	O Ring
3	208532PT	1	Handle Grip
4	302085PT	2	Button
5	208002PT	2	Spring
6	207963PT	2	Button Guide
7	207964PT	1	Label Ring
8	944728PT	1	Label
9	207925PT	1	Protective Ring
10	207967PT	1	Label
11	207905PT	1	Light Ring Assembly
12	T50-1102567	1	Handle Nut
13	302086PT	1	Start Switch Assembly
14	961559PT	1	Housing Connector
15	207921PT	1	Screw
16	207903PT	1	Inner Handle
17	207949PT	1	Screw
18	961558PT	1	Connector Body
19	961692PT	1	Contact Carrier
20	961557PT	1	TIM Cable
21	961564PT	1	Circuit Board Holder
22	961575PT	1	Rubber Grommet
23	T50-1000391	1	Wire Guide
24	961668PT	1	TIM Board
25	60371	1	O Ring
26	T55-1000046	1	Encoder Cable

# = Quantity

02

MODELS  
50ESN28FD3  
50ESN43GD3  
50ESN65HD4  
50ESN85JD4  
50ESN125KD4

 #2 1.4 Nm

REF	NUMBER	#	EN
			DESCRIPTION
1	T50-1102557	1	Motor Cover
2	961556PT	1	Flex Cable
3	See Table 1	1	Motor Assembly (Includes 2)
4	See Table 1	1	Transducer
5	T50-1102792	4	Screw
6	See Table 1	2	Accessory Cover

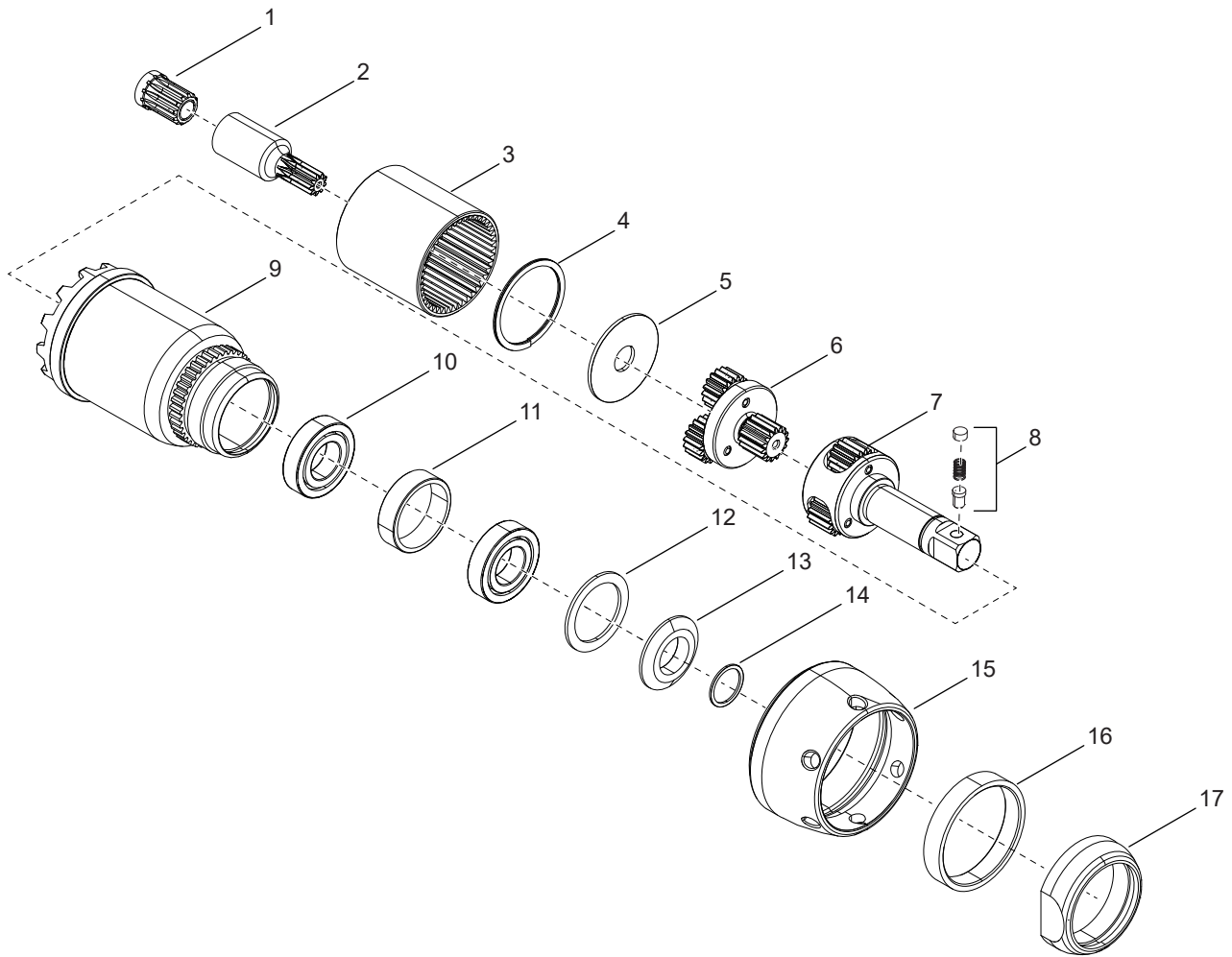
# = Quantity

TABLE 1							
REF	DESCRIPTION	#	50ESN28FD3	50ESN43GD3	50ESN65HD4	50ESN85JD4	50ESN125KD4
3	Motor Assembly	1	T50-3102169	T50-3000622	T50-3000622	T50-3000622	T50-3000622
4	Transducer	1	961603PT-026	961604PT-041	961606PT-064	961606PT-082	961606PT-122
6	Accessory Cover	2	T50-1102275	T50-1102568	T50-1102568	T50-1102568	T50-1102568

# = Quantity

03

MODELS  
50ESN28FD3



	# 15 67.5 Nm
	# 17

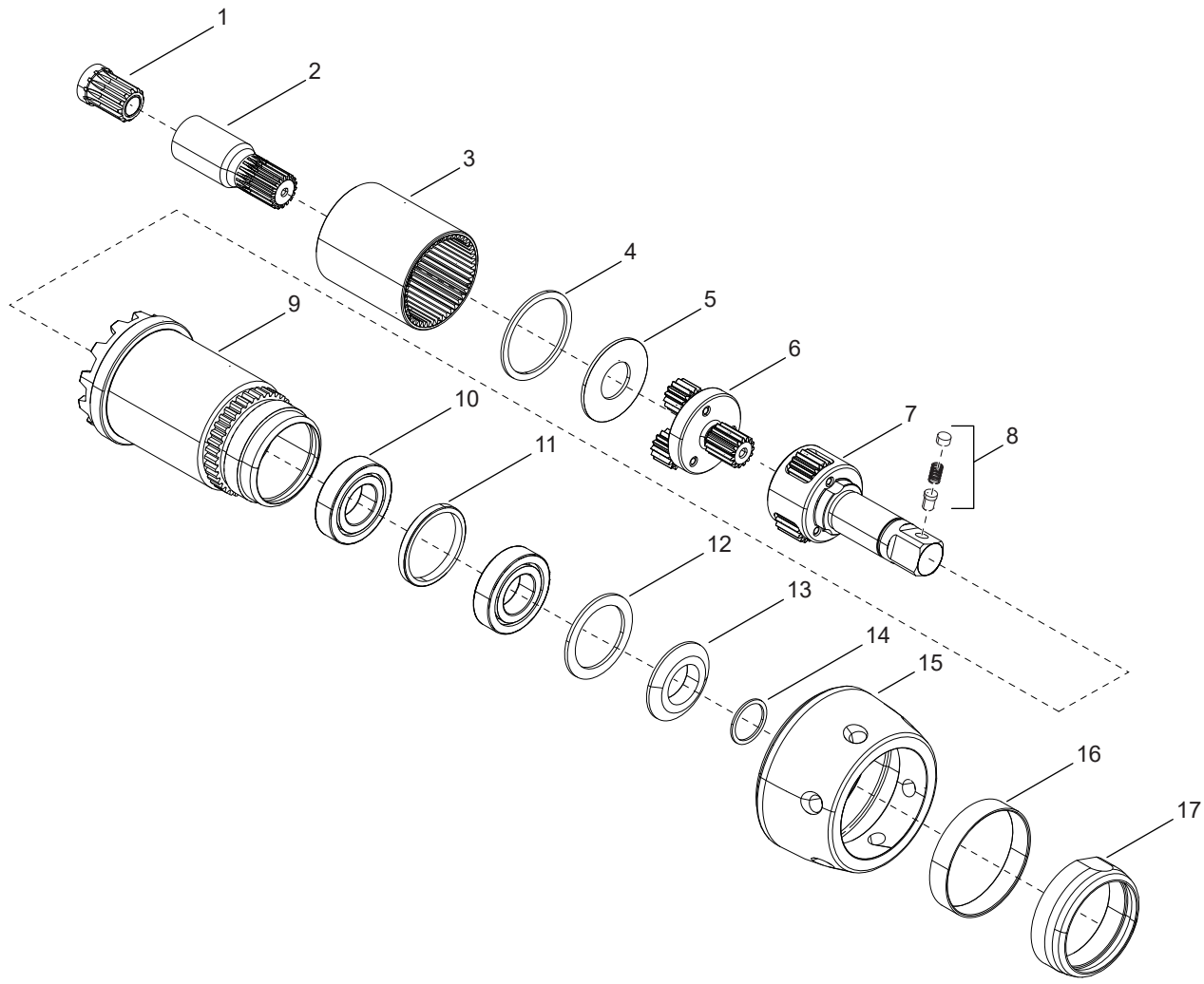


REF	NUMBER	#	EN
			DESCRIPTION
1	541044	1	Pinion Adapter
2	208118PT	1	Pinion Extension
3	208202PT	1	Ring Gear
4	14-111	1	Retaining Ring
5	208129PT	1	Washer
6	T50-3000592	1	Planetary Gear Assembly
7	T50-3000702	1	Planetary Gear Assembly
8	T50-3102217	1	3/8" Pin Retainer Kit (Included with 7)
9	208720PT	1	Gear Case
10	542089	2	Bearing
11	541775	1	Spacer
12	542076	1	Retaining Ring
13	541919	1	Spindle Washer
14	800216	1	Retaining Ring
15	208128PT	1	Lock Nut
16	208721PT	1	Beauty Ring
17	208722PT	1	Retaining Nut

# = Quantity

**03**

**MODELS**  
**50ESN28ED3**



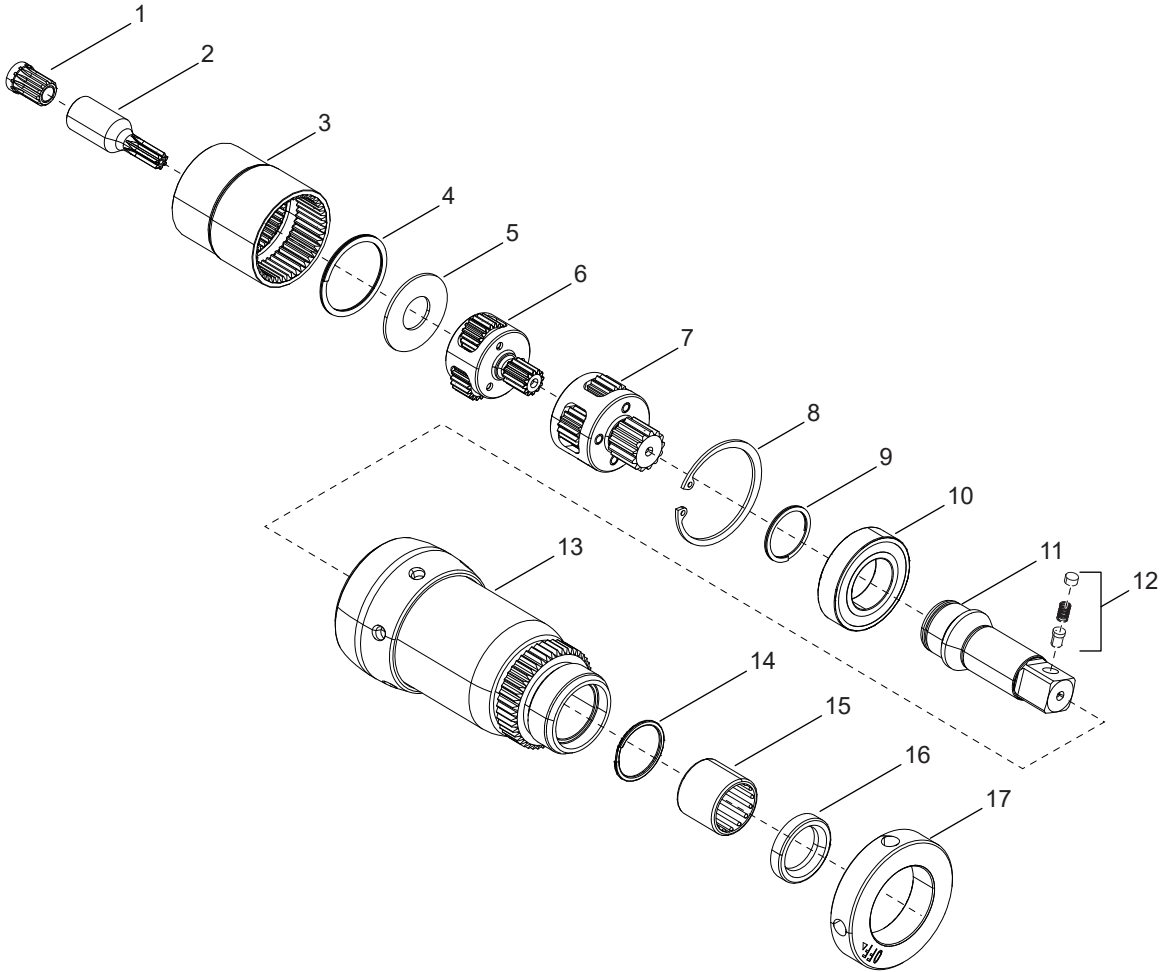
 # 15 67.5 Nm  
 # 17



REF	NUMBER	#	EN
			DESCRIPTION
1	541044	1	Pinion Adapter
2	208228PT	1	Pinion Extension
3	208227PT	1	Ring Gear
4	1019500	1	Retaining Ring
5	208231PT	1	Washer
6	T50-3000594	1	Planetary Gear Assembly
7	T50-3000595	1	Planetary Gear Assembly
8	T50-3102217	1	3/8" Pin Retainer Kit (Included with 7)
9	T50-1000145	1	Gear Case
10	542089	2	Bearing
11	542672	1	Spacer
12	542076	1	Retaining Ring
13	541919	1	Spindle Washer
14	800216	1	Retaining Ring
15	208225PT	1	Lock Nut
16	542134	1	Beauty Ring
17	542097	1	Retaining Nut

# = Quantity

**05**

MODELS  
50ESN65HD4



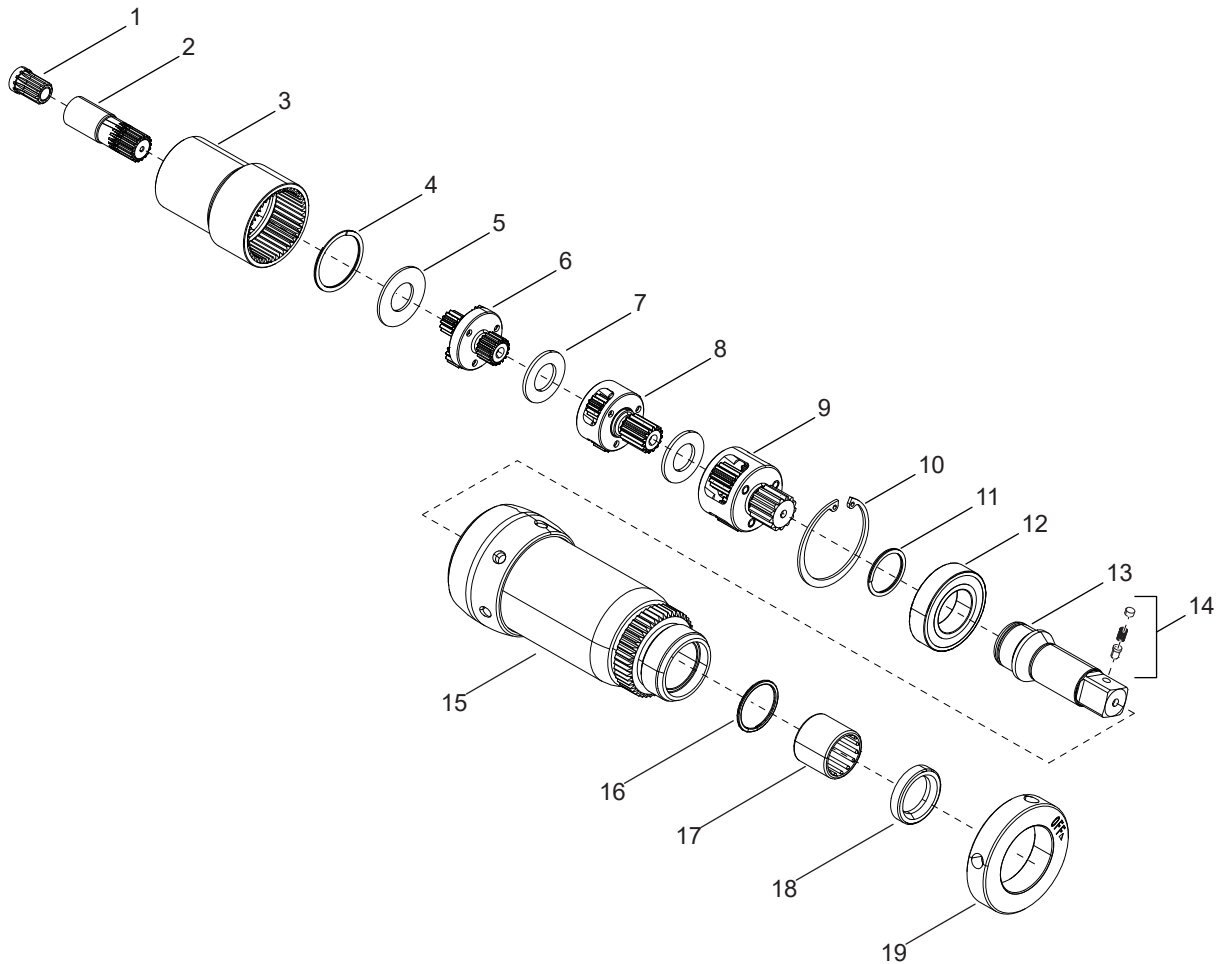
-  # 12 67.5 Nm
-  # 17 50 Nm


REF	NUMBER	#	EN
			DESCRIPTION
1	541044	1	Pinion Adapter
2	T50-1000187	1	Pinion Extension
3	T50-1000184	1	Ring Gear
4	T50-1000181	1	Retaining Ring
5	T50-1000180	1	Washer
6	T50-3000596	1	Planetary Gear Assembly
7	T50-3000597	1	Planetary Gear Assembly
8	883358	1	Retaining Ring
9	203574	1	Retaining Ring
10	208433PT	1	Bearing
11	T50-3000598	1	Output Spindle
12	T50-3102217	1	3/8" Retainer Pin Kit (Included with 11)
13	T50-3000124	1	Gear Case Assembly
14	623595	1	Retaining Ring
15	203253	1	Bearing
16	93140030	1	Seal
17	11841013PT	1	Nut

# = Quantity

**06**

MODELS  
50ESN85JD4



 # 15 67.5 Nm

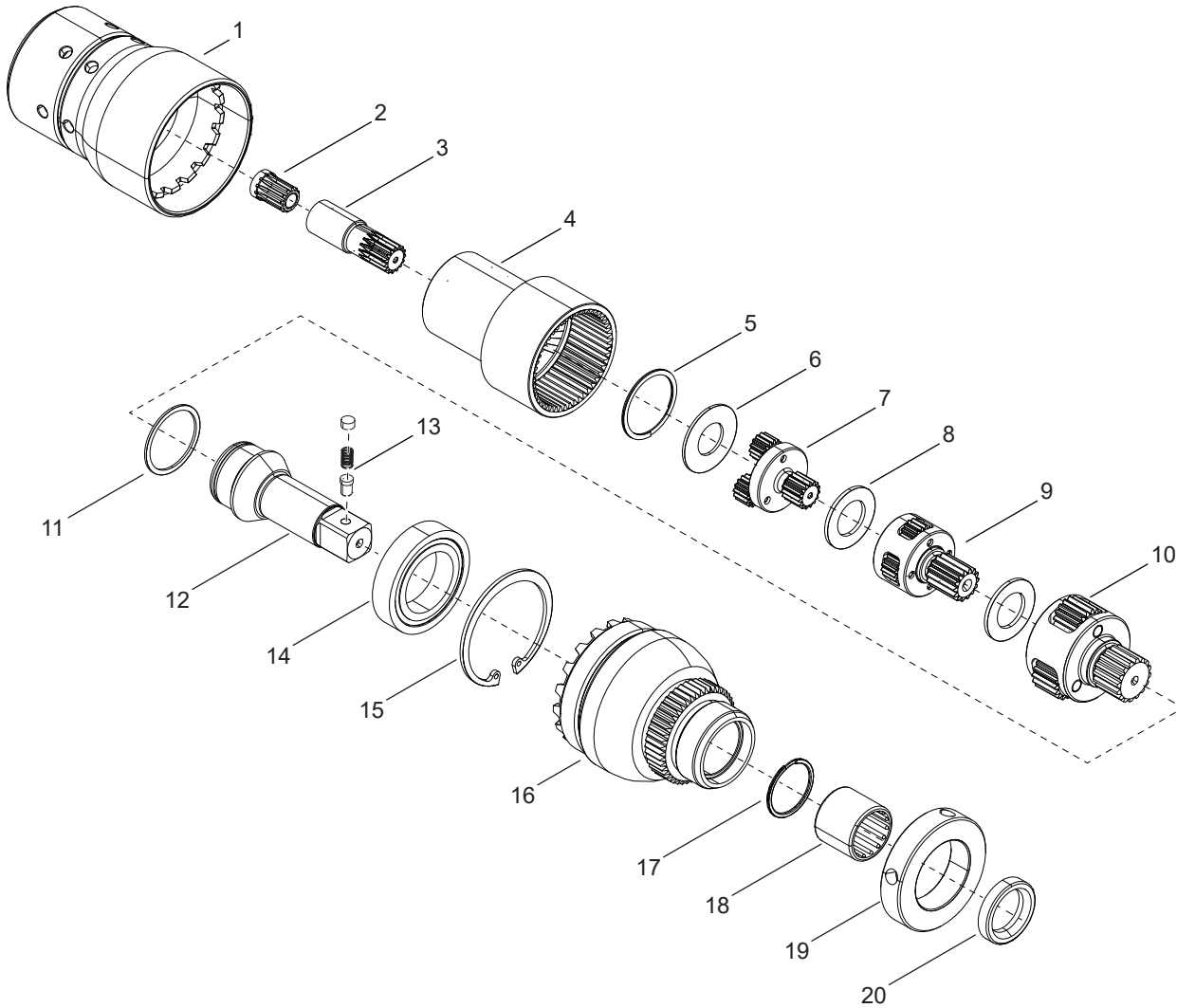
 # 19 50 Nm

REF	NUMBER	#	EN
			DESCRIPTION
1	541044	1	Pinion Adapter
2	208460PT	1	Pinion Extension
3	208459PT	1	Ring Gear
4	869504	1	Retaining Ring
5	208190PT	1	Washer
6	T50-3000599	1	Planetary Gear Assembly
7	502977	2	Washer
8	T50-3000600	1	Planetary Gear Assembly
9	T50-3000601	1	Planetary Gear Assembly
10	883358	1	Retaining Ring
11	203574PT	1	Retaining Ring
12	208433PT	1	Bearing
13	T50-3000598	1	Spindle Assembly
14	T50-3102218	1	1/2" Pin Retainer (Included with 13)
15	T50-3000125	1	Gear Case Assembly
16	623595	1	Retaining Ring
17	203253	1	Bearing
18	11841013PT	1	Nut
19	93140030	1	Seal

# = Quantity

**07**

MODEL  
50ESN125KD4



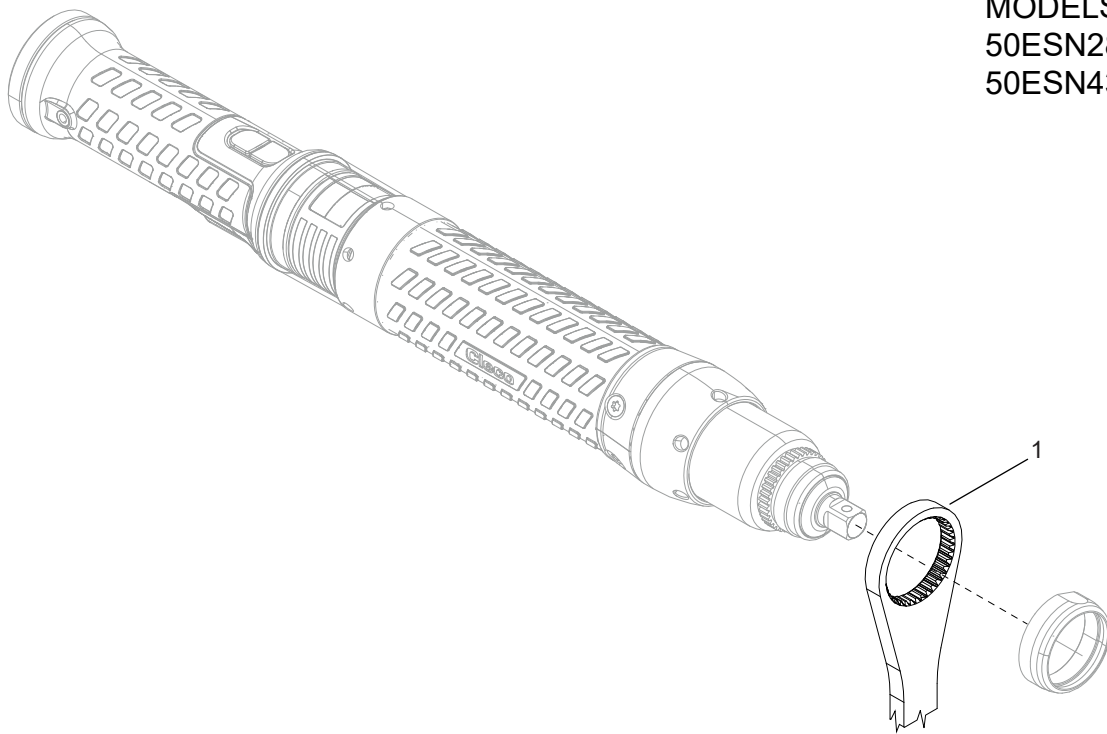
 # 1 85 Nm

 # 19 50 Nm

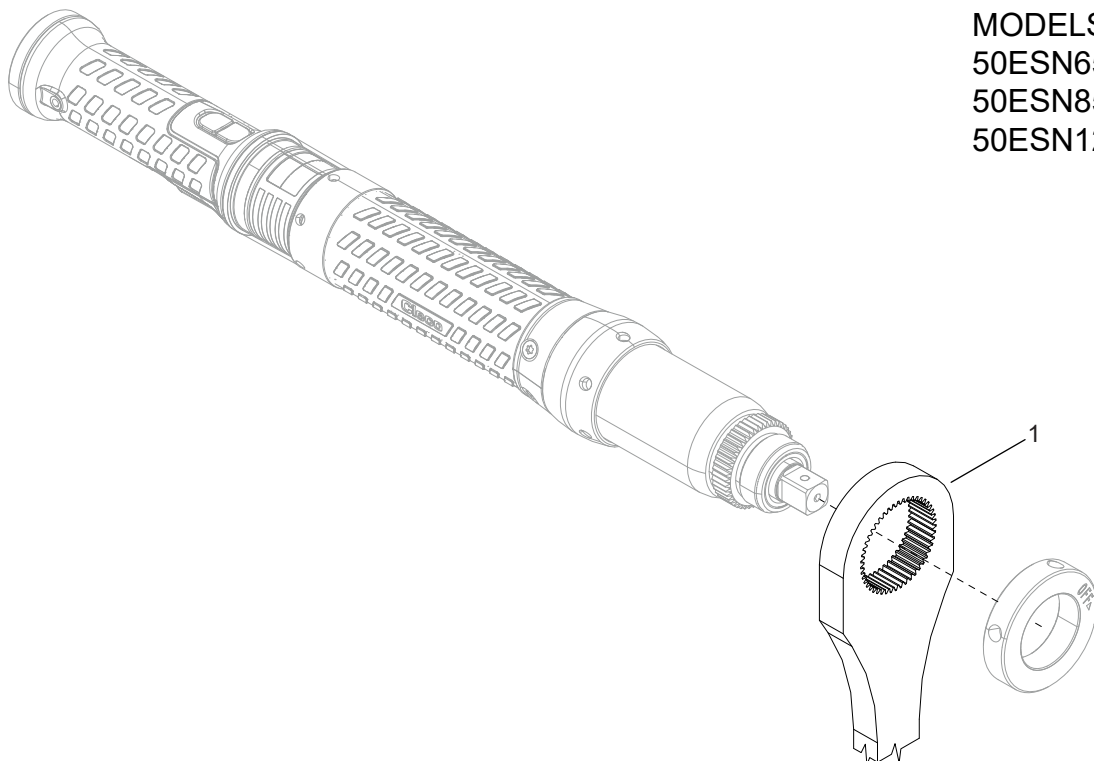


REF	NUMBER	#	EN
			DESCRIPTION
1	T50-3000117	1	Gear Case Assembly
2	541044	1	Pinion Adapter
3	208189PT	1	Pinion Extension
4	208188PT	1	Ring Gear
5	869504	1	Retaining Ring
6	208190PT	1	Washer
7	T50-3000603	1	Planetary Gear Assembly
8	202262	2	Washer
9	T50-3000604	1	Planetary Gear Assembly
10	T50-3000667	1	Planetary Gear Assembly
11	1009530	1	Retaining Ring
12	T50-3102293	1	Spindle Assembly
13	T50-3102218	1	1/2" Pin Retainer Kit (Included with 12)
14	869881	1	Bearing
15	203699	1	Retaining Ring
16	T50-1000202	1	Output Housing
17	623595	1	Retaining Ring
18	203253	1	Bearing
19	11841013PT	1	Nut
20	93140030	1	Seal

# = Quantity

**08**

MODELS  
50ESN28FD3  
50ESN43GD3

**09**

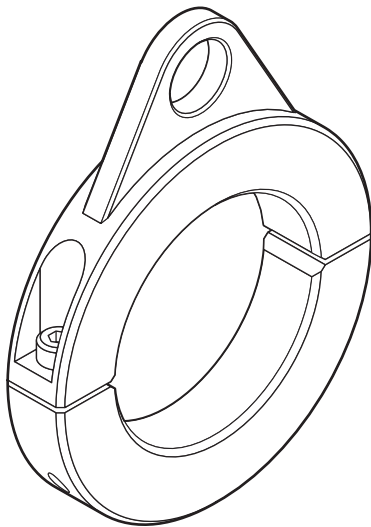
MODELS  
50ESN65HD4  
50ESN85JD4  
50ESN125KD4

REF	NUMBER	#	50ESN28FD3	50ESN43GD3	50ESN65HD4	50ESN85JD4	50ESN125KD4
1	Reaction Bar	1	542127	542127	48047128	48047128	48047128

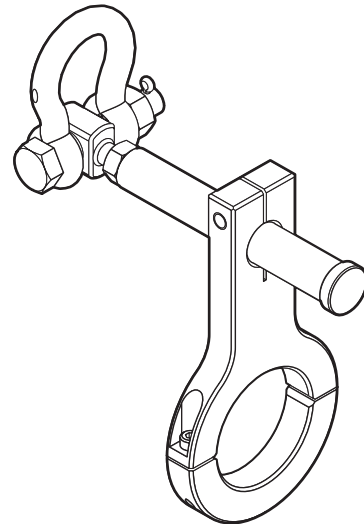
# = Quantity

**10**

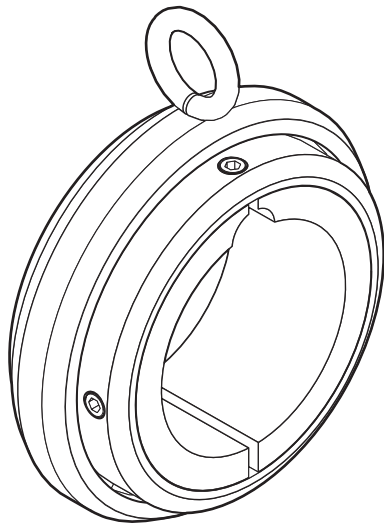
**RIGHT ANGLE  
AND INLINE  
30/50 SERIES**



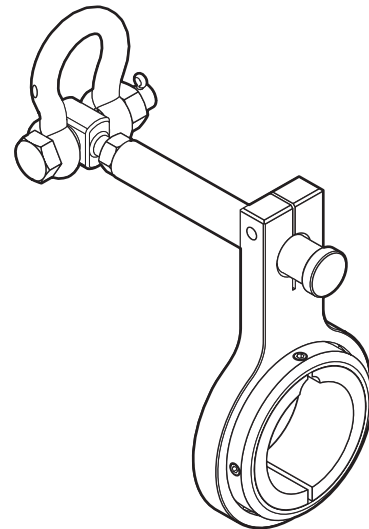
T50-3102295



T50-3102297



T50-3102299 - LOCATION, MOTOR HOUSING  
T50-3000063 - 2 - MODEL 50EAN59HA3 - LOCATION,  
ANGLE HEAD





T50-3102301



# POWER TOOLS SALES & SERVICE CENTERS

Please note that all locations may not service all products.  
Contact the nearest Cleco® Sales & Service Center for the appropriate facility to handle your service requirements.

-  Sales Center
-  Service Center

## NORTH AMERICA | SOUTH AMERICA

### Detroit, Michigan

Apex Tool Group  
2630 Superior Court  
Auburn Hills, MI 48236  
Phone: +1 (248) 393-5644  
Fax: +1 (248) 391-6295

### Lexington, South Carolina

Apex Tool Group  
670 Industrial Drive  
Lexington, SC 29072  
Phone: +1 (800) 845-5629  
Phone: +1 (919) 387-0099  
Fax: +1 (803) 358-7681

### Mexico

Apex Tool Group  
Vialidad El Pueblito #103  
Parque Industrial Querétaro  
Querétaro, QRO 76220  
Mexico  
Phone: +52 (442) 211 3800  
Fax: +52 (800) 685 5560

### Brazil

Apex Tool Group  
Av. Liberdade, 4055  
Zona Industrial Iporanga  
Sorocaba, São Paulo  
CEP# 18087-170  
Brazil  
Phone: +55 15 3238 3870  
Fax: +55 15 3238 3938

## EUROPE | MIDDLE EAST | AFRICA

### England

Apex Tool Group GmbH  
C/O Spline Gauges  
Piccadilly, Tamworth  
Staffordshire B78 2ER  
United Kingdom  
Phone: +44 1827 8727 71  
Fax: +44 1827 8741 28

### Germany

Apex Tool Group GmbH  
Industriestraße 1  
73463 Westhausen  
Germany  
Phone: +49 (0) 73 63 81 0  
Fax: +49 (0) 73 63 81 222

### Hungary

Apex Tool Group  
Hungária Kft.  
Platánfa u. 2  
9027 Győr  
Hungary  
Phone: +36 96 66 1383  
Fax: +36 96 66 1135

## ASIA PACIFIC

### Australia

Apex Tool Group  
519 Nurigong Street, Albury  
NSW 2640  
Australia  
Phone: +61 2 6058 0300

### China

Apex Power Tool Trading  
(Shanghai) Co., Ltd.  
2nd Floor, Area C  
177 Bi Bo Road  
Pu Dong New Area, Shanghai  
China 201203 P.R.C.  
Phone: +86 21 60880320  
Fax: +86 21 60880298

### India

Apex Power Tool India  
Private Limited  
Gala No. 1, Plot No. 5  
S. No. 234, 235 & 245  
Indialand Global  
Industrial Park  
Taluka-Mulsi, Phase I  
Hinjawadi, Pune 411057  
Maharashtra, India  
Phone: +91 020 66761111

### Japan

Apex Tool Group Japan  
Korin-Kaikan 5F,  
3-6-23 Shibakoen, Minato-Ku,  
Tokyo 105-0011, JAPAN  
Phone: +81-3-6450-1840  
Fax: +81-3-6450-1841

### Korea

Apex Tool Group Korea  
#1503, Hibrand Living Bldg.,  
215 Yangjae-dong,  
Seocho-gu, Seoul 137-924,  
Korea  
Phone: +82-2-2155-0250  
Fax: +82-2-2155-0252



**Apex Tool Group, LLC**

Phone: +1 (800) 845-5629  
Phone: +1 (919) 387-0099  
Fax: +1 (803) 358-7681  
www.ClecoTools.com  
www.ClecoTools.de