

Cleco®

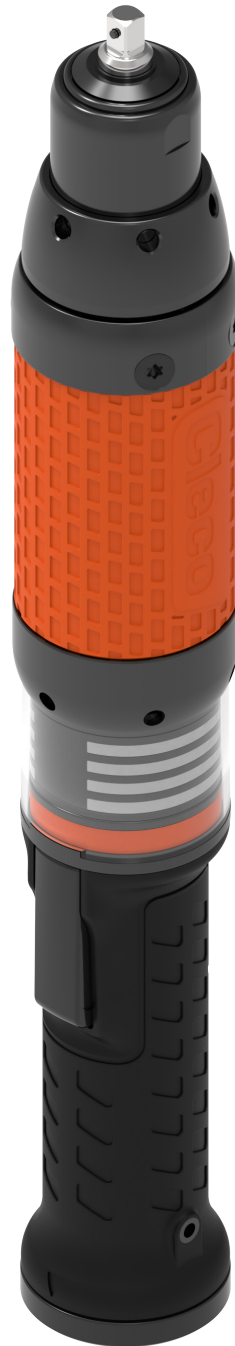
Parts Manual

SP12-1130

2025-01 | REV. C

NeoTek™

30ESN Series
Corded Electric Assembly Tool



For additional product information visit our website at <http://www.ClecoTools.com>

Copyright © Apex Tool Group, 2025

No part of this document may be reproduced in any way or in any form, in whole or in part, or in a natural or machine-readable language, or transmitted on electronic, mechanical, optical, or other media, without the express permission of the Apex Tool Group.

Disclaimer

The Apex Tool Group reserves the right to modify, supplement, or improve this document or the product without prior notice.

Trademark

Cleco is a registered trademark of Apex Brands, Inc.

Apex Tool Group

670 Industrial Drive
Lexington, SC 29072

Manufacturer:

Apex Tool Group GmbH
Industriestraße 1
73463 Westhausen, Germany

Importers:

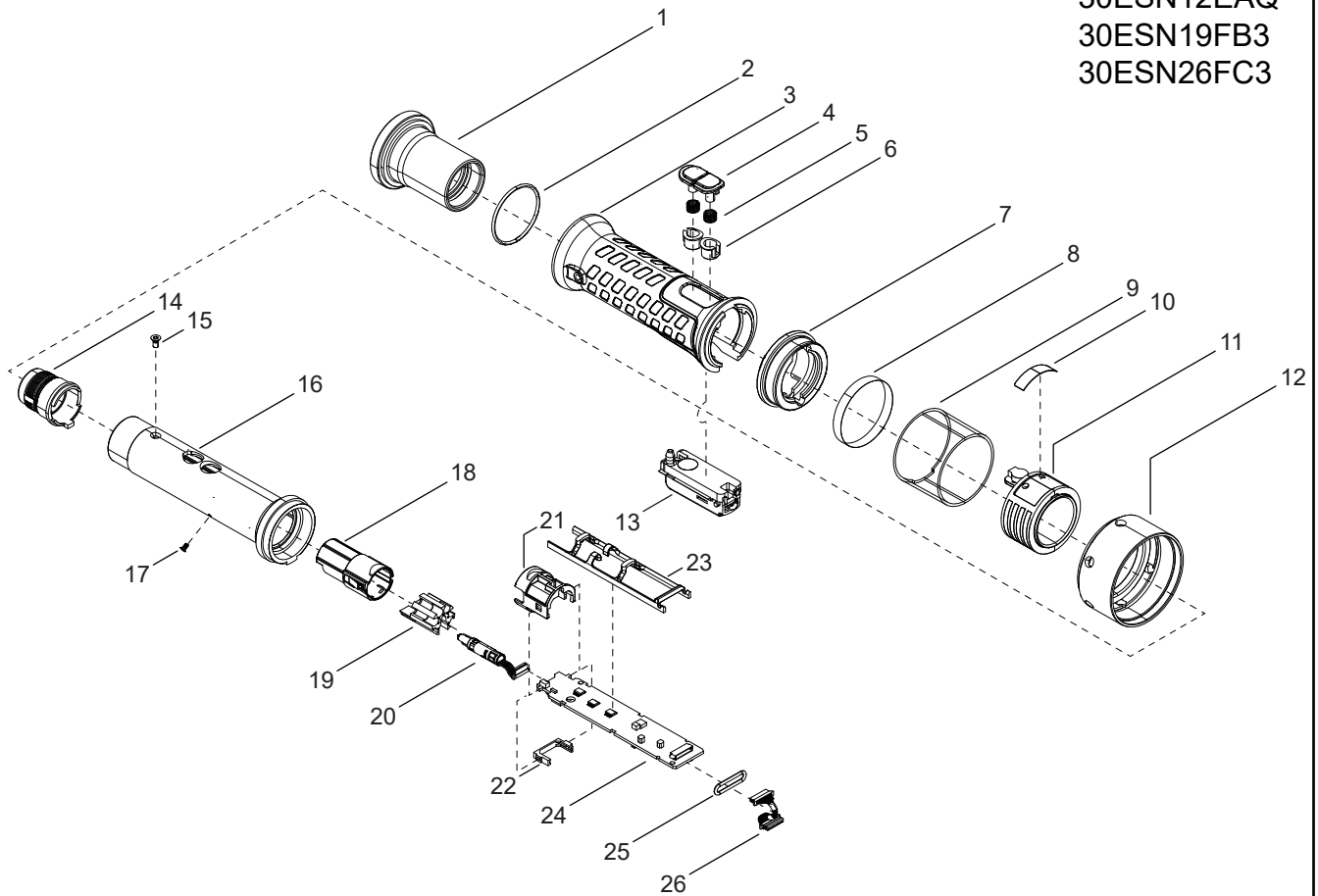
Apex Tool Group, LLC
670 Industrial Drive
Lexington, South Carolina 29072, USA





Further Document for Safety Instructions

No.	Document type
TM12-1109	Instruction Manual 30 & 50 & 70 Series NeoTek

01

MODELS
 30ESN05BD2
 30ESN05BDQ
 30ESN12FA3
 30ESN12EAQ
 30ESN19FB3
 30ESN26FC3



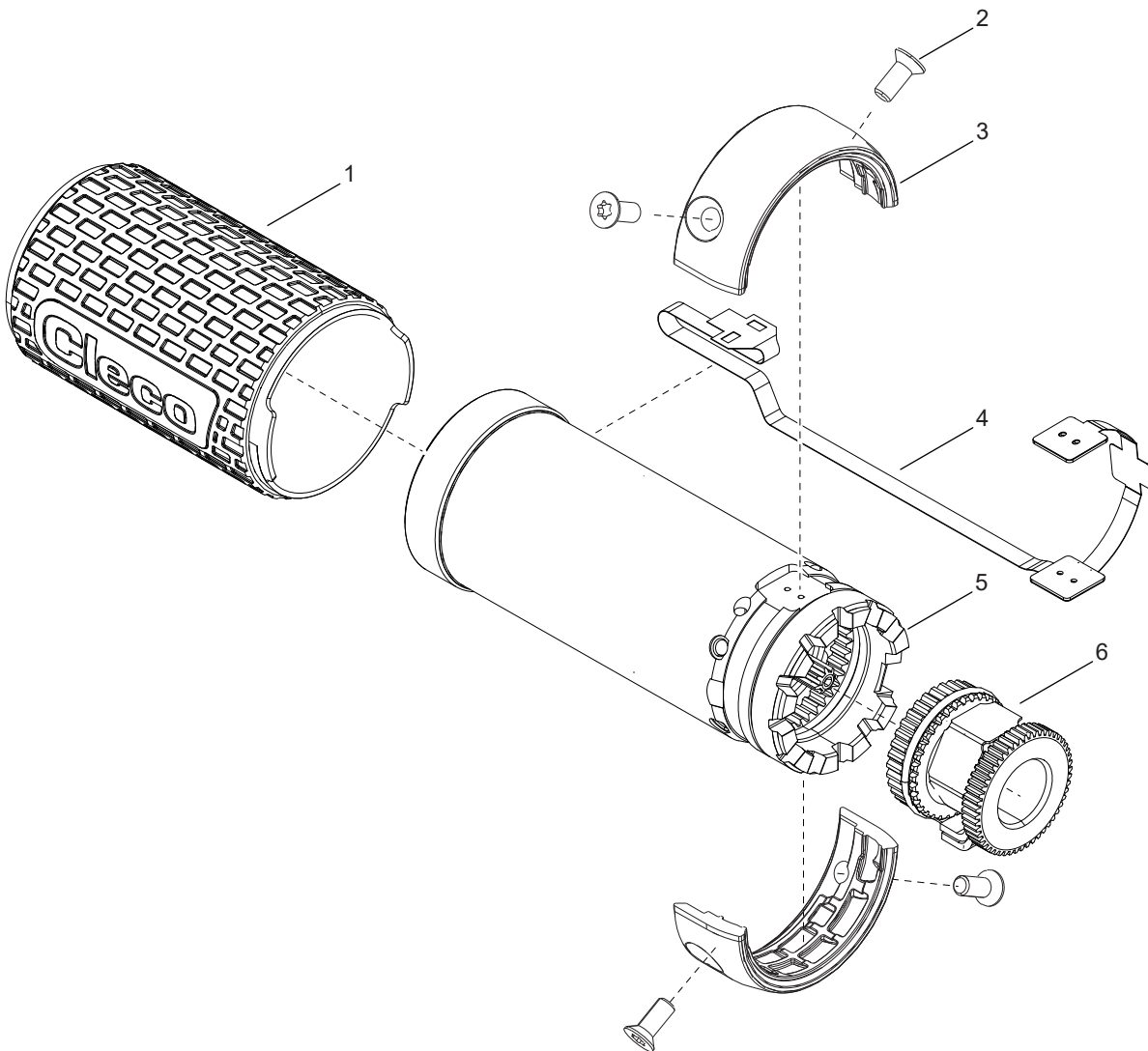
-  # 1 37 Nm
-  # 12 50.5 Nm
-  # 15 0.9 Nm
-  # 17 0.42 Nm

REF	NUMBER	#	EN
			DESCRIPTION
1	208746PT	1	Handle Nut
2	22598	1	O Ring
3	208532PT	1	Handle Grip
4	302085PT	2	Button
5	208002PT	2	Spring
6	207963PT	2	Button Guide
7	207964PT	1	Label Ring
8	944728PT	1	Label
9	207925PT	1	Protective Ring
10	207967PT	1	Label
11	207905PT	1	Light Ring Assembly
12	T50-1102567	1	Handle Nut
13	302086PT	1	Start Switch Assembly
14	961559PT	1	Housing Connector
15	207921PT	1	Screw
16	207903PT	1	Inner Handle
17	207949PT	1	Screw
18	961558PT	1	Connector Body
19	961692PT	1	Contact Carrier
20	961557PT	1	TIM Cable
21	961564PT	1	Circuit Board Holder
22	961575PT	1	Rubber Grommet
23	T50-1000391	1	Wire Guide
24	961668PT	1	TIM Board
25	60371	1	O Ring
26	T55-1000046	1	Encoder Cable

= Quantity

02

MODELS
30ESN05BD2
30ESN05BDQ
30ESN12FA3
30ESN12EAQ
30ESN19FB3
30ESN26FC3

 # 2 1.4 Nm

REF	NUMBER	#	EN
			DESCRIPTION
1	T50-1102396	1	Motor Cover
2	961556PT	1	Flex Cable
3	T50-3000621	1	Motor Assembly (Includes 2)
4	See Table 1	1	Transducer
5	T50-1102792	4	Screw
6	T50-1102275	2	Accessory Cover

= Quantity

TABLE 1					
REF	DESCRIPTION	#	30ESN05BD2	30ESN05BDQ	30ESN12FA3
4	Transducer	1	961602PT-004	961602PT-0004	961602PT-019

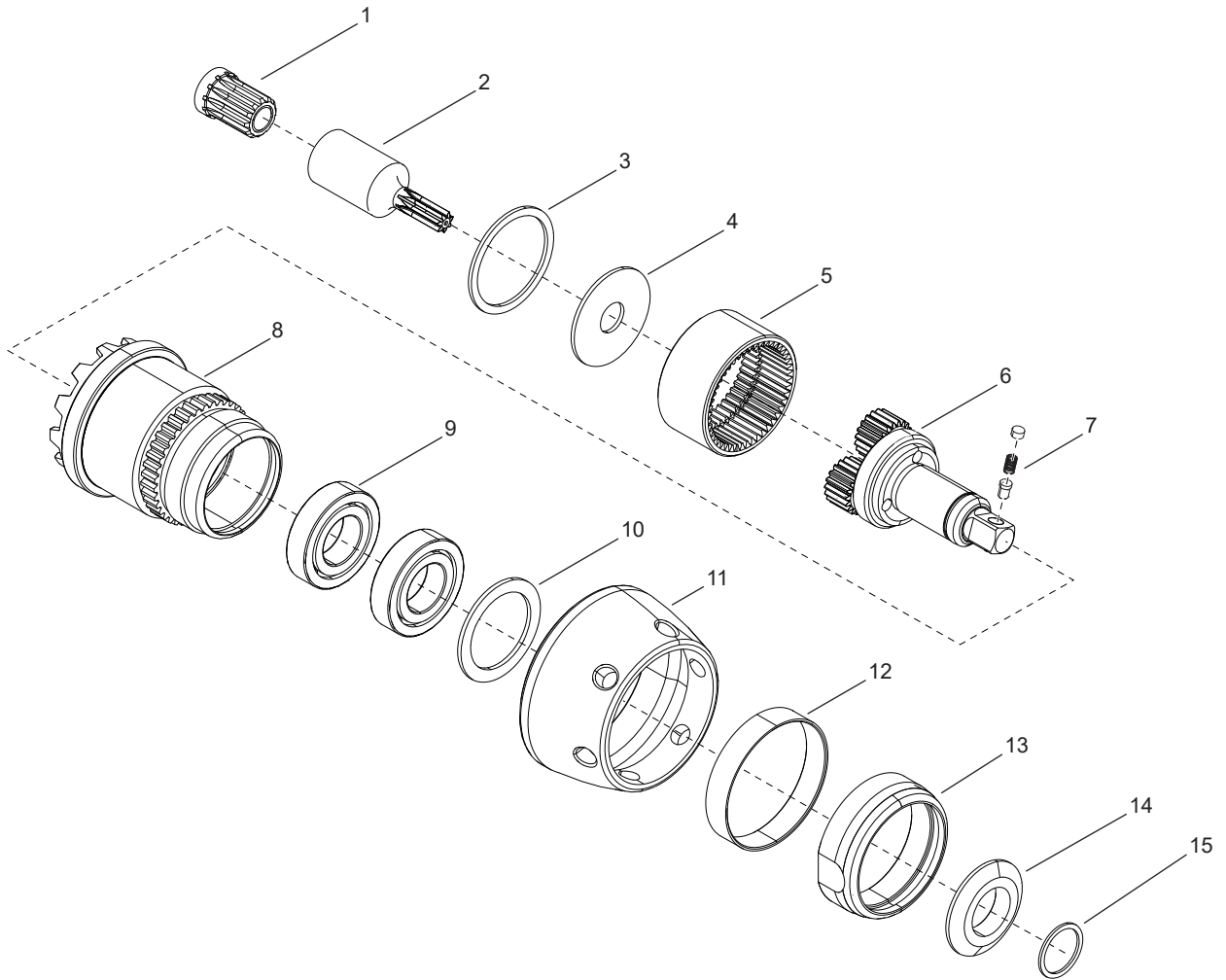
= Quantity


TABLE 1 (CONTINUED)					
REF	DESCRIPTION	#	30ESN12EAQ	30ESN19FB3	30ESN26FC3
4	Transducer	1	961602PT-019	961602PT-019	961602PT-025

= Quantity

03

MODEL
30ESN05BD2



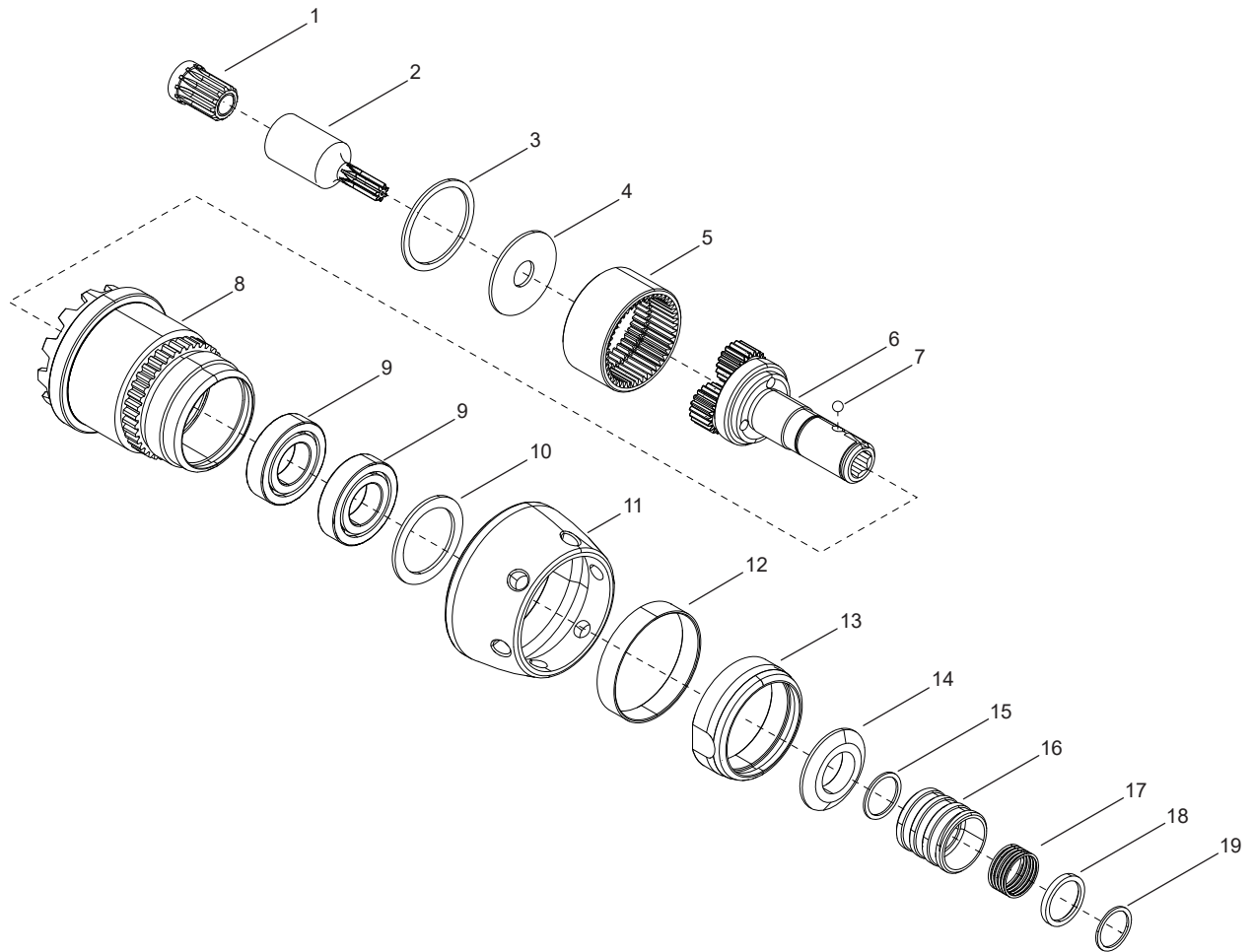
 # 11 67.5 Nm

REF	NUMBER	#	EN
			DESCRIPTION
1	541044	1	Pinion Adapter
2	208161PT	1	Pinion Extension
3	208185PT	1	Retaining Ring
4	208486PT	1	Washer
5	208520PT	1	Ring Gear
6	T50-3000583	1	Planetary Gear Assembly (Includes Item 7)
7	T50-3100220	1	1/4" Pin Retainer Kit
8	T50-1102226	1	Gear Case
9	542089	2	Bearing
10	542076	1	Retaining Ring
11	208128PT	1	Lock Nut
12	208721PT	1	Beauty Ring
13	208722PT	1	Retaining Nut
14	541919	1	Spindle Washer
15	800216	1	Retaining Ring

= Quantity

04

MODEL
30ESN05BDQ



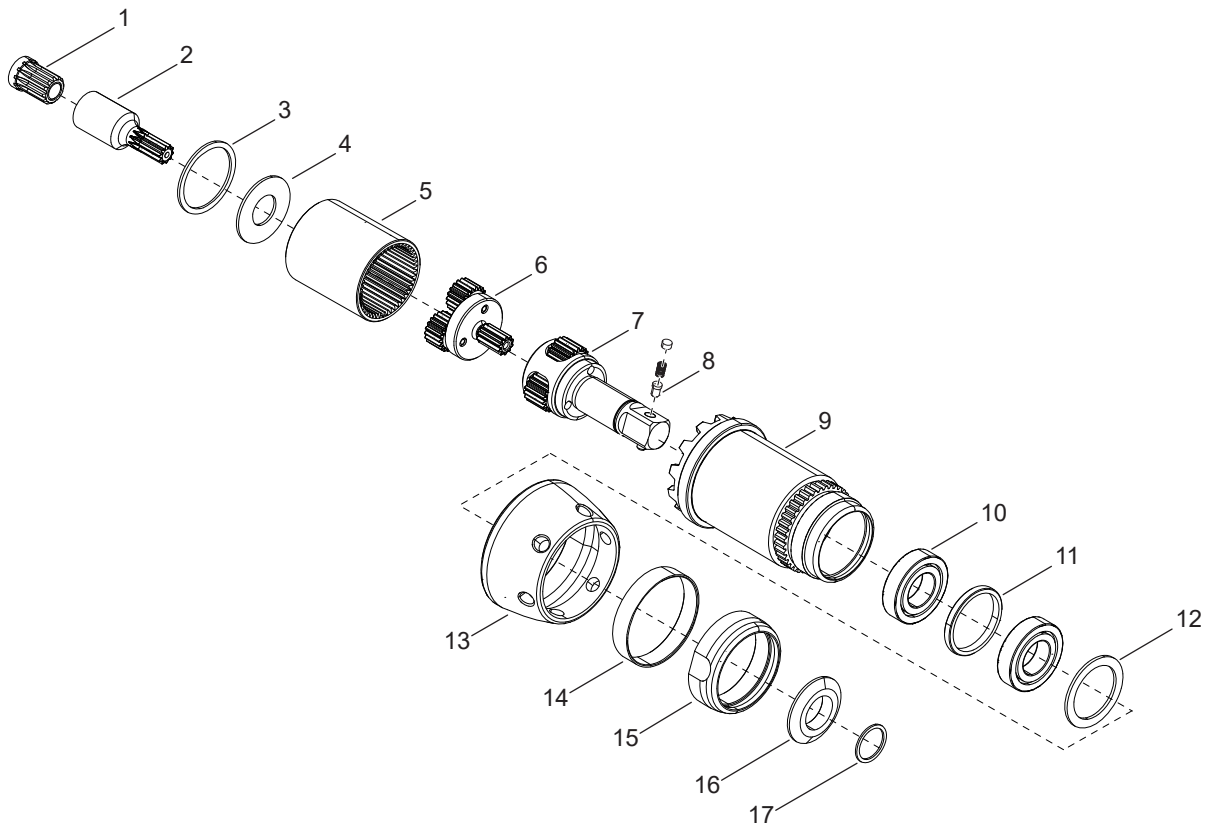
 # 11 67.5 Nm


REF	NUMBER	#	EN
			DESCRIPTION
1	541044	1	Pinion Adapter
2	208161PT	1	Pinion Extension
3	208185PT	1	Retaining Ring
4	208486PT	1	Washer
5	208520PT	1	Ring Gear
6	T50-3000584	1	Planetary Gear Assembly
7	844265	1	Ball
8	T50-1102226	1	Gear Case
9	542089	2	Bearing
10	542076	1	Retaining Ring
11	208128PT	1	Lock Nut
12	208721PT	1	Beauty Ring
13	208722PT	1	Retaining Nut
14	541914	1	Spindle Washer
15	833688	1	Retaining Ring
16	536592	1	Sleeve
17	540842	1	Spring
18	540800	1	Washer
19	503009	1	Retaining Ring

= Quantity

05

MODELS
30ESN12FA3
30ESN19FB3
30ESN26FC3



 # 13 67.5 Nm

REF	NUMBER	#	EN
			DESCRIPTION
1	541044	1	Pinion Adapter
2	See Table 2	1	Pinion Extension
3	208185PT	1	Retaining Ring
4	See Table 2	1	Washer
5	208159PT	1	Ring Gear
6	See Table 2	1	Planetary Gear Assembly
7	See Table 2	1	Planetary Gear Assembly (Includes Item 7)
8	T50-3102217	1	3/8" Pin Retainer Kit
9	280720PT	1	Gear Case
10	542089	2	Bearing
11	541775	1	Bearing Spacer
12	542076	1	Retaining Ring
13	208128PT	1	Lock Nut
14	208721PT	1	Beauty Ring
15	208722PT	1	Retaining Nut
16	541919	1	Spindle Washer
17	800216	1	Retaining Ring

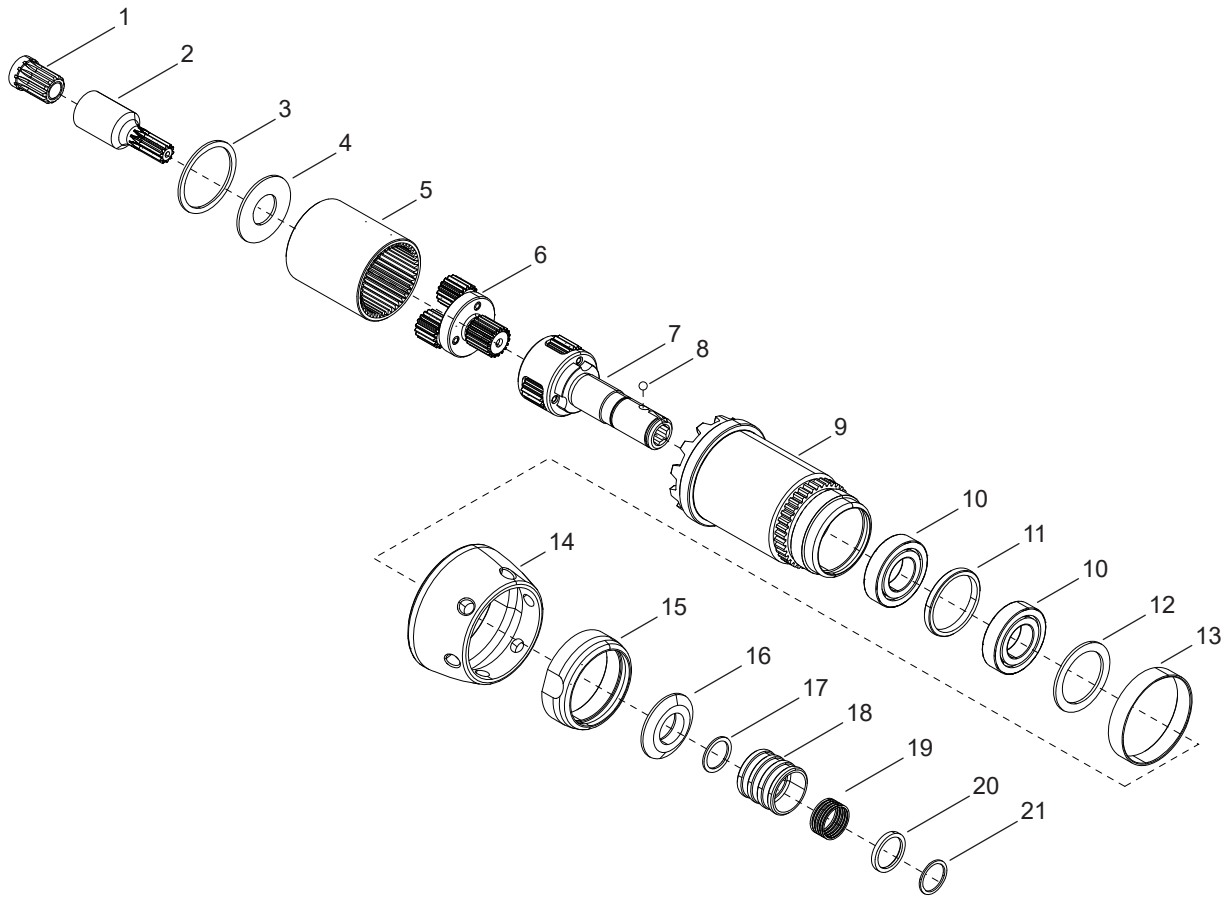
= Quantity


TABLE 2					
REF	NUMBER	#	30ESN12FA3	30ESN19FB3	30ESN26FC3
2	Pinion Extension	1	208137PT	208137PT	208161PT
4	Washer	1	208482PT	208486PT	208486PT
6	Planetary Gear Asm	1	T50-3000585	T50-3000587	T50-3000589
7	Planetary Gear Asm	1	T50-3000586	T50-3000588	T50-3000588

= Quantity

06

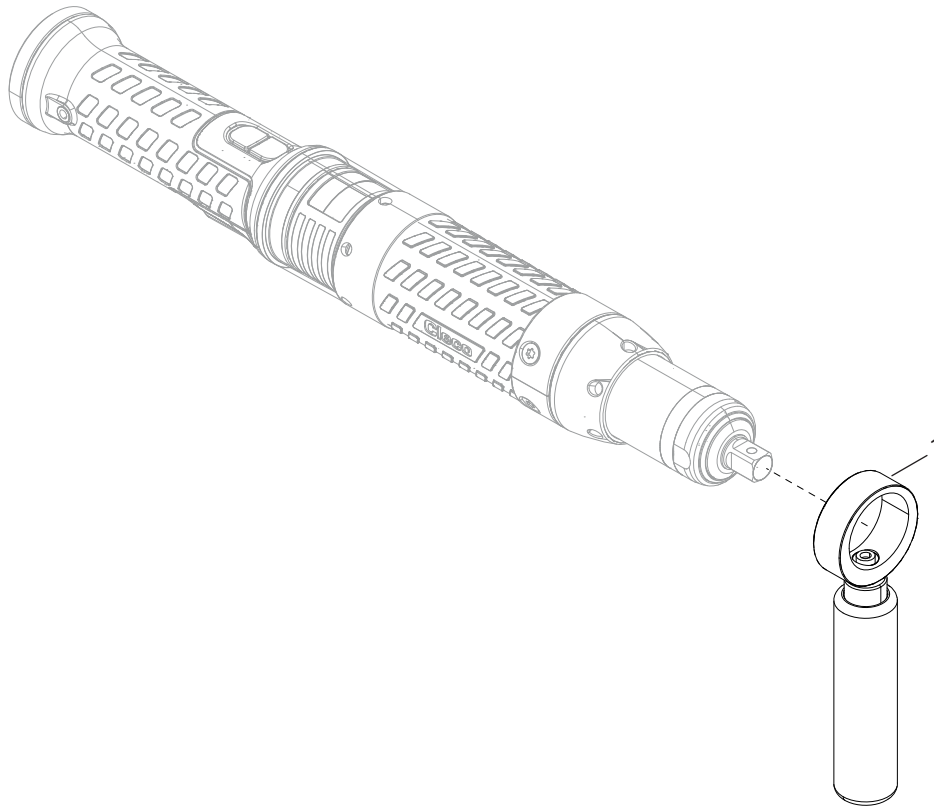
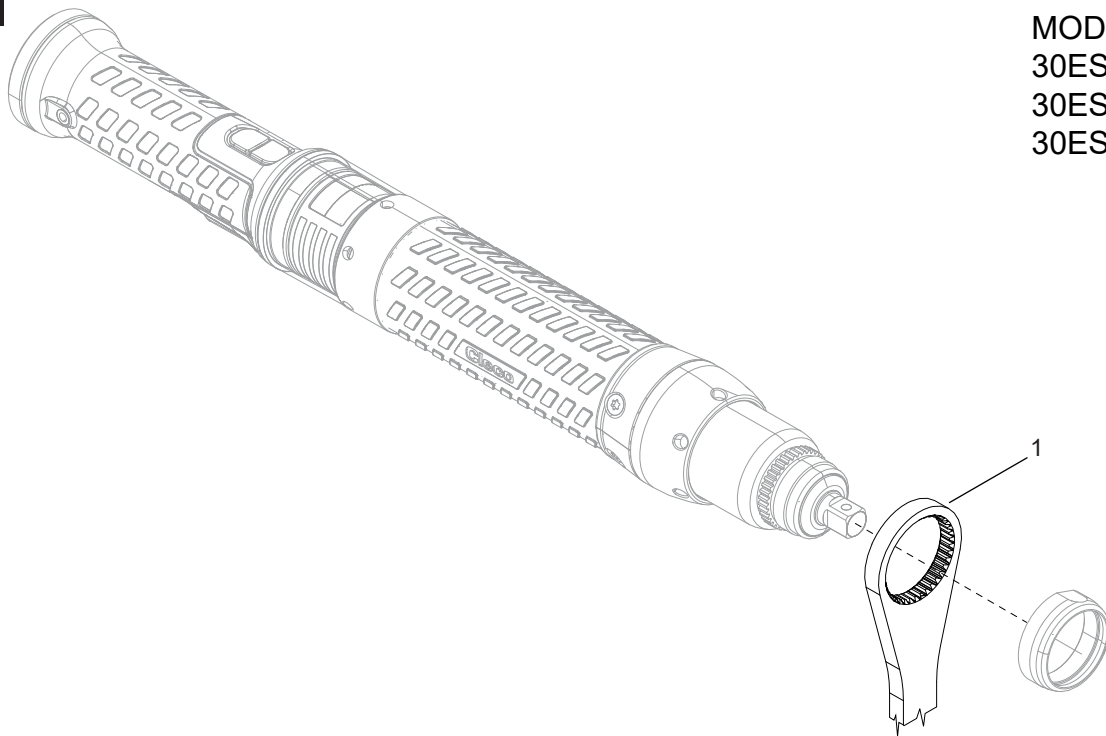
MODEL
30ESN12EAQ



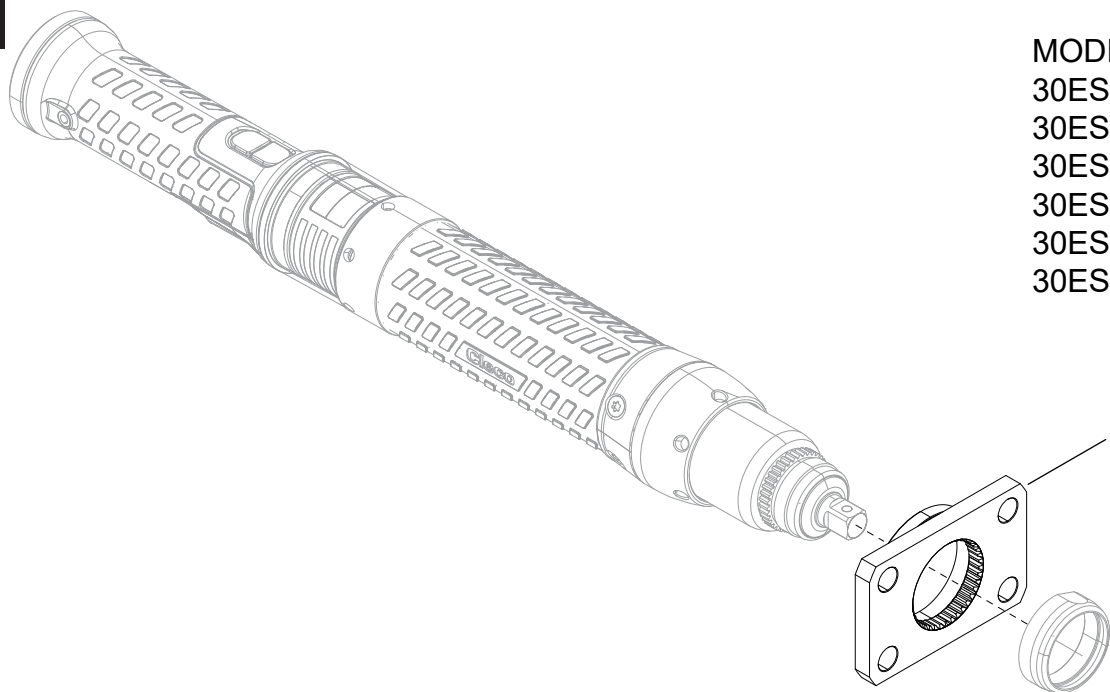
 # 14 67.5 Nm

REF	NUMBER	#	EN
			DESCRIPTION
1	541044	1	Pinion Adapter
2	208137PT	1	Pinion Extension
3	208185PT	1	Retaining Ring
4	208482PT	1	Washer
5	208159PT	1	Ring Gear
6	T50-3000585	1	Planetary Gear Asm
7	T50-3000591	1	Planetary Gear Asm
8	844265	1	Ball
9	208720PT	1	Gear Case
10	542089	2	Bearing
11	541775	1	Bearing Spacer
12	542076	1	Retaining Ring
13	208721PT	1	Beauty Ring
14	208128PT	1	Lock Nut
15	208722PT	1	Retaining Nut
16	541914	1	Spindle Washer
17	800135	1	Retaining Ring
18	536592	1	Sleeve
19	540842	1	Spring
20	540800	1	Washer
21	503009	1	Retaining Ring

= Quantity

07MODELS
30ESN12EAQ**08**MODELS
30ESN12FA3
30ESN19FB3
30ESN26FC3

09



MODELS
30ESN05BD2
30ESN05BDQ
30ESN12FA3
30ESN12EAQ
30ESN19FB3
30ESN26FC3

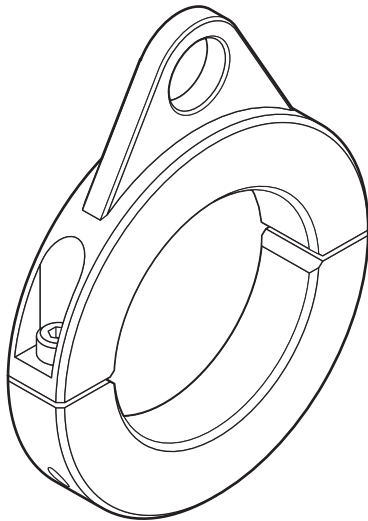
TABLE 3						
REF	NUMBER	#	30ESN05BD2	30ESN05BDQ	30ESN12FA3	30ESN12EAQ
1	Dead Handle	1	N/A	N/A	N/A	301934PT
1	Reaction Bar	1	N/A	N/A	542127	N/A
1	Reaction Plate	1	T50-1102233	T50-1102233	T50-1102233	T50-1102233

TABLE 3 (CONTINUED)				
REF	NUMBER	#	30ESN19FB3	30ESN26FC3
1	Dead Handle	1	N/A	N/A
1	Reaction Bar	1	542127	542127
1	Reaction Plate	1	T50-1102233	T50-1102233

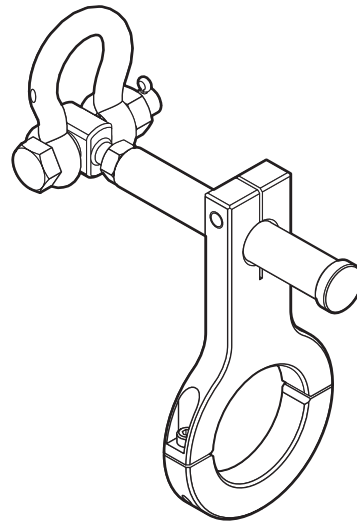
= Quantity

10

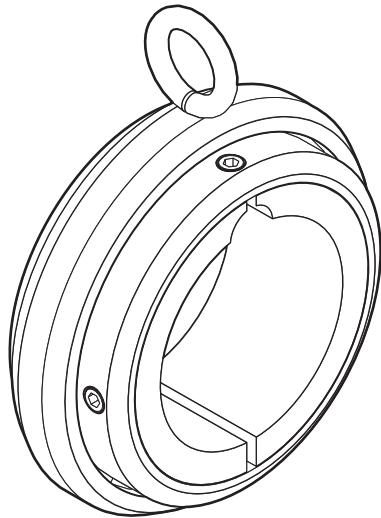
RIGHT ANGLE
AND INLINE
30/50 SERIES



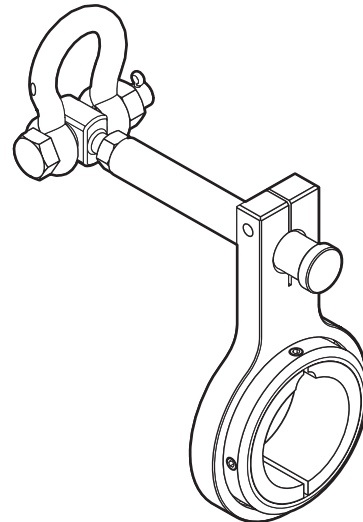
T50-3102295



T50-3102297



T50-310299 - LOCATION, MOTOR HOUSING
T50-3000063 - 1 - MODEL 30EAN28FA3 - LOCATION,
ANGLE HEAD



T50-3102301

POWER TOOLS SALES & SERVICE CENTERS

Please note that all locations may not service all products.

Contact the nearest Cleco® Sales & Service Center for the appropriate facility to handle your service requirements.

 Sales Center

 Service Center

NORTH AMERICA | SOUTH AMERICA

Detroit, Michigan

Apex Tool Group
2630 Superior Court
Auburn Hills, MI 48236
Phone: +1 (248) 393-5644
Fax: +1 (248) 391-6295

Lexington, South Carolina

Apex Tool Group
670 Industrial Drive
Lexington, SC 29072
Phone: +1 (800) 845-5629
Phone: +1 (919) 387-0099
Fax: +1 (803) 358-7681

Mexico

Apex Tool Group
Vialidad El Pueblito #103
Parque Industrial Querétaro
Querétaro, QRO 76220
Mexico
Phone: +52 (442) 211 3800
Fax: +52 (800) 685 5560

Brazil

Apex Tool Group
Av. Liberdade, 4055
Zona Industrial Iporanga
Sorocaba, São Paulo
CEP# 18087-170
Brazil
Phone: +55 15 3238 3870
Fax: +55 15 3238 3938

EUROPE | MIDDLE EAST | AFRICA

England

Apex Tool Group GmbH
C/O Spline Gauges
Piccadilly, Tamworth
Staffordshire B78 2ER
United Kingdom
Phone: +44 1827 8727 71
Fax: +44 1827 8741 28

Germany

Apex Tool Group GmbH
Industriestraße 1
73463 Westhausen
Germany
Phone: +49 (0) 73 63 81 0
Fax: +49 (0) 73 63 81 222

Hungary

Apex Tool Group
Hungária Kft.
Platánfa u. 2
9027 Győr
Hungary
Phone: +36 96 66 1383
Fax: +36 96 66 1135

ASIA PACIFIC

Australia

Apex Tool Group
519 Nurigong Street, Albury
NSW 2640
Australia
Phone: +61 2 6058 0300

China

Apex Power Tool Trading
(Shanghai) Co., Ltd.
2nd Floor, Area C
177 Bi Bo Road
Pu Dong New Area, Shanghai
China 201203 P.R.C.
Phone: +86 21 60880320
Fax: +86 21 60880298

India

Apex Power Tool India
Private Limited
Gala No. 1, Plot No. 5
S. No. 234, 235 & 245
Indialand Global
Industrial Park
Taluka-Mulsi, Phase I
Hinjawadi, Pune 411057
Maharashtra, India
Phone: +91 020 66761111

Japan

Apex Tool Group Japan
Korin-Kaikan 5F,
3-6-23 Shibakoen, Minato-Ku,
Tokyo 105-0011, JAPAN
Phone: +81-3-6450-1840
Fax: +81-3-6450-1841

Korea

Apex Tool Group Korea
#1503, Hibrand Living Bldg.,
215 Yangjae-dong,
Seocho-gu, Seoul 137-924,
Korea
Phone: +82-2-2155-0250
Fax: +82-2-2155-0252



Apex Tool Group, LLC

Phone: +1 (800) 845-5629

Phone: +1 (919) 387-0099

Fax: +1 (803) 358-7681

www.ClecoTools.com

www.ClecoTools.de